



THE RESERVE
RESIDENCES



HORIZON

FLOOR PLANS

THE HEART OF BUKIT TIMAH





Welcome to the heart of Bukit Timah, a prestigious and sought-after location that embodies the best of urban living. This prime estate is known for its upscale residences, top-tier schools, and abundance of greenery, offering an unparalleled lifestyle that combines the convenience of modern amenities with the serenity of lush greenery.

SCHEMATIC DIAGRAM








THE RESERVE RESIDENCES

-  1-Bedroom Type A1, A2
-  2-Bedroom Type B1-B7A
-  2-Bedroom + Study Type B8-B9A
-  3-Bedroom Type C1-C4
-  3-Bedroom + Study Type C5

HORIZON

-  3-Bedroom Flexi Type C9-C10P
-  4-Bedroom Type D2-D4

TREETOPS

-  4-Bedroom + Study Type G1
-  4-Bedroom + Study (Sky Terrace) Type D5
-  4-Bedroom + Study (Duplex) Type G2
-  5-Bedroom Type G3, G4
-  5-Bedroom (Sky Terrace) Type E1-E3
-  5-Bedroom (Duplex) Type G5
-  5-Bedroom (Penthouse) Type P1-P4

9 JALAN ANAK BUKIT

Pool View ← Upper Bukit Timah Rd → Jalan Jurong Kechil / Beauty World → Pool View

UNIT / FLOOR	80	81	82	83	84	85	86	87	88	89	90
17	SKYTERRACE										
16	A1	A1	C4	C4	A1	A2	A2	B3	C9	B7	A1
15	A1	A1	C4	C4	A1	A2	A2	B3	C9	B7	A1
14	A1	A1	C4	C4	A1	A2	A2	B3	C9	B7	A1
13	A1	A1	C4	C4	A1	A2	A2	B3	C9	B7	A1
12	A1	A1	C4	C4	A1	A2	A2	B3	C9	B7	A1
11	A1	A1	C4	C4	A1	A2	A2	B3	C9	B7	A1
10	A1	A1	C4	C4	A1	A2	A2	B3	C9	B7	A1
9	A1	A1	C4	C4	A1	A2	A2	B3	C9	B7	A1
8	A1	A1	C4	C4	A1	A2	A2	B3	C9	B7	A1
7	A1	A1	C4	C4	A1	A2	A2	B3	C9	B7	A1
6	A1	A1	C4	C4	A1	A2	A2	B3	C9	B7	A1
5	LANDSCAPE		C4P	C4	A1	LANDSCAPE		B3	C9	LANDSCAPE	
4	LANDSCAPE / RESIDENTIAL CARPARK		G1		LANDSCAPE / RESIDENTIAL CARPARK		G3		LANDSCAPE / RESIDENTIAL CARPARK		G4
3	RETAIL										
2	RETAIL										
1	RETAIL										
B1	RETAIL										
B1M	RETAIL										

11 JALAN ANAK BUKIT

Pool View ← Jalan Jurong Kechil / Beauty World → Pool View

UNIT / FLOOR	91	92	93	94	95	96	97	98	99
17	SKYTERRACE								
16	A1	C2	C10	B3	A2	A2	C3	D2	B1
15	A1	C2	C10	B3	A2	A2	C3	D2	B1
14	A1	C2	C10	B3	A2	A2	C3	D2	B1
13	A1	C2	C10	B3	A2	A2	C3	D2	B1
12	A1	C2	C10	B3	A2	A2	C3	D2	B1
11	A1	C2	C10	B3	A2	A2	C3	D2	B1
10	A1	C2	C10	B3	A2	A2	C3	D2	B1
9	A1	C2	C10	B3	A2	A2	C3	D2	B1
8	A1	C2	C10	B3	A2	A2	C3	D2	B1
7	A1	C2	C10	B3	A2	A2	C3	D2	B1
6	A1	C2	C10	B3	A2	A2	C3	D2	B1
5	LANDSCAPE		C10	B3	LANDSCAPE		G2	D2P	LANDSCAPE
4	LANDSCAPE / RESIDENTIAL CARPARK		G4		LANDSCAPE / RESIDENTIAL CARPARK		G2		LANDSCAPE / RESIDENTIAL CARPARK
3	BUS INTERCHANGE								
2	RETAIL								
1	RETAIL								
B1	RETAIL								
B1M	RETAIL								

13 JALAN ANAK BUKIT

Pool View ← Jalan Jurong Kechill / Bukit Timah Nature Reserve → City View / Pool View

100	101	102	103	104	105	106	107	108		
ROOFTERRACE									33	
ROOFTERRACE		P4			WATER TANK		P1			
B5A	B9A	D2	B4A	B8		C10	B6	B5A		
B5A	B9A	D2	B4A	B8	C2A	C10	B6	B5A		
B5A	B9A	D2	B4A	B8	C2A	C10	B6	B5A		
B5A	B9A	D2	B4A	B8	C2A	C10	B6	B5A		
B5A	B9A	D2	B4A	B8	C2A	C10	B6	B5A		
B5A	B9A	D2	B4A	B8	C2A	C10	B6	B5A		
B5A	B9A	D2	B4A	B8	C2A	C10	B6	B5A		
B5A	B9A	D2	B4A	B8	C2A	C10	B6	B5A		
B5A	B9A	D2	B4A	B8	C2A	C10	B6	B5A		
B5A	B9A	D2	B4A	B8	C2A	C10	B6	B5A		
B5A	B9A	D2	B4A	B8	C2A	C10	B6	B5A		
B5A	B9A	D2	B4A	B8	C2A	C10	B6	B5A		
B5A	B9A	D2	B4A	B8	C2A	C10	B6	B5A		
B5A	B9A	D2	B4A	B8	C2A	C10	B6	B5A		
B5A	B9A	D2	B4A	B8	C2A	C10	B6	B5A		
B5A	B9A	D2	B4A	B8	C2A	C10	B6	B5A		
SKY TERRACE		D5	SKY TERRACE			E3		SKY TERRACE		
B2	B9	D2	B4	B5	C2	C10	B3	B2		
B2	B9	D2	B4	B5	C2	C10	B3	B2		
B2	B9	D2	B4	B5	C2	C10	B3	B2		
B2	B9	D2	B4	B5	C2	C10	B3	B2		
B2	B9	D2	B4	B5	C2	C10	B3	B2		
B2	B9	D2	B4	B5	C2	C10	B3	B2		
B2	B9	D2	B4	B5	C2	C10	B3	B2		
B2	B9	D2	B4	B5	C2	C10	B3	B2		
B2	B9	D2	B4	B5	C2	C10	B3	B2		
B2	B9	D2	B4	B5	C2	C10	B3	B2		
B2	B9	D2	B4	B5	C2	C10	B3	B2		
LANDSCAPE		B9P	LANDSCAPE			C10P	LANDSCAPE		C9P	
RESIDENTIAL CARPARK		G5	LANDSCAPE / RESIDENTIAL CARPARK			LANDSCAPE / RESIDENTIAL CARPARK		LANDSCAPE / RESIDENTIAL CARPARK		
RETAIL						RESIDENTIAL DROP-OFF				
RETAIL						RESIDENTIAL DROP-OFF				
RETAIL & SERVICE RESIDENCE CARPARK						RESIDENTIAL DROP-OFF				
									B1	
									B1M	

15 JALAN ANAK BUKIT

Rifle Range ← Jalan Jurong Kechil / Beauty World → Bukit Timah Nature Reserve → Rifle Range

109	110	111	112	113	114	115	116	117	UNIT / FLOOR		
ROOFTERRACE									33		
P2		WATER TANK			P3		P3				
C5	C9		B8	B5A	D4	D4	C1		31		
C5	C9	B7A	B8	B5A	D4	D4	C1		30		
C5	C9	B7A	B8	B5A	D4	D4	C1		29		
C5	C9	B7A	B8	B5A	D4	D4	C1		28		
C5	C9	B7A	B8	B5A	D4	D4	C1		27		
C5	C9	B7A	B8	B5A	D4	D4	C1		26		
C5	C9	B7A	B8	B5A	D4	D4	C1		25		
C5	C9	B7A	B8	B5A	D4	D4	C1		24		
C5	C9	B7A	B8	B5A	D4	D4	C1		23		
C5	C9	B7A	B8	B5A	D4	D4	C1		22		
C5	C9	B7A	B8	B5A	D4	D4	C1		21		
C5	C9	B7A	B8	B5A	D4	D4	C1		20		
C5	C9	B7A	B8	B5A	D4	D4	C1		19		
C5	C9	B7A	B8	B5A	D4	D4	C1		18		
SKY TERRACE		E2			SKY TERRACE		E1	E1	SKY TERRACE	17	
B2	B3	C9	B7	B5	B5	D4	D4	B2	16		
B2	B3	C9	B7	B5	B5	D4	D4	B2	15		
B2	B3	C9	B7	B5	B5	D4	D4	B2	14		
B2	B3	C9	B7	B5	B5	D4	D4	B2	13		
B2	B3	C9	B7	B5	B5	D4	D4	B2	12		
B2	B3	C9	B7	B5	B5	D4	D4	B2	11		
B2	B3	C9	B7	B5	B5	D4	D4	B2	10		
B2	B3	C9	B7	B5	B5	D4	D4	B2	9		
B2	B3	C9	B7	B5	B5	D4	D4	B2	8		
B2	B3	C9	B7	B5	B5	D4	D4	B2	7		
B2	B3	C9	B7	B5	B5	D4	D4	B2	6		
LANDSCAPE		B9P	LANDSCAPE			C10P	LANDSCAPE		C9P		
RESIDENTIAL CARPARK		G5	LANDSCAPE / RESIDENTIAL CARPARK			LANDSCAPE / RESIDENTIAL CARPARK		D3P	D3P	LANDSCAPE / RESIDENTIAL CARPARK	4
RETAIL						RESIDENTIAL DROP-OFF				3	
RETAIL						RESIDENTIAL DROP-OFF				2	
RETAIL & SERVICE RESIDENCE CARPARK						RESIDENTIAL DROP-OFF				1	
									B1		
									B1M		



FACILITIES
LEVEL 4

LEGEND

- 1 600m Jogging Trail (From Level 4 to Level 5)
- 2 Petunia Pavilion
- 3 Paloma Pavilion
- 4 Angelica Dining Pavilion with BBQ
- 5 Anise Dining Pavilion with BBQ
- 6 Hammock Garden
- 7 Foliage Garden (Thematic)
- 8 Palm Grove (Thematic)
- 9 Outdoor Fitness 1
- 10 The Perch Living Room

OTHERS

- A Residential Entrance (Level 3)
- B Water Tanks (Level 12,17,31,32)
- C Genset (Level 6)
- D Substation (Level 1)
- E Bin Centre (Level 1)
- F Cooling Towers (Level 4)

UNIT PLAN
LEVEL 4

HORIZON

■ 4-Bedroom
Type D2-D4

TREETOPS

- 4-Bedroom + Study
Type G1
- 4-Bedroom + Study (Duplex)
Type G2
- 5-Bedroom
Type G3, G4
- 5-Bedroom (Duplex)
Type G5



FACILITIES
LEVEL 5

LEGEND

- 1 Adventure Playground
- 2 Outdoor Fitness 2
- 3 Lovage Dining Pavilion
- 4 Changing Room with Sauna
- 5 The Raintree Function Room
- 6 The Alstonia Function Room
- 7 Casuarina Entertainment Rooms
- 8 Water Cascade
- 9 The Willow Function Room
- 10 Lemongrass Dining Pavilion
- 11 Linden Dining Pavilion
- 12 Terrace Deck
- 13 Grand Lawn
- 14 The Perch Reading Room
- 15 Commune Deck
- 16 50m Lap Pool
- 17 Aqua Gym with Spa
- 18 Spa Pool
- 19 Family Pool
- 20 Aqua Cove
- 21 Play Pool
- 22 Kid's Pool
- 23 Play Lawn
- 24 Shorea Cabanas
- 25 Pool Cabanas
- 26 Garden Decks 1
- 27 Terrace Steps
- 28 Dog Run

OTHERS

- A Residential Entrance (Level 3)
- B Water Tanks (Level 12,17,31,32)
- C Genset (Level 6)
- D Substation (Level 1)
- E Bin Centre (Level 1)
- F Cooling Towers (Level 4)

UNIT PLAN
LEVEL 5

THE RESERVE RESIDENCES

- 1-Bedroom Type A1, A2
- 2-Bedroom Type B1-B7A
- 2-Bedroom + Study Type B8-B9A
- 3-Bedroom Type C1-C4

HORIZON

- 3-Bedroom Flexi Type C9-C10P
- 4-Bedroom Type D2-D4

TREETOPS

- 4-Bedroom + Study (Duplex) Type G2
- 5-Bedroom (Duplex) Type G5

LEVEL 5





LEVEL 6-16

FACILITIES

LEVEL 6

LEGEND

- 1 Retreat Cabanas
- 2 Kid's Play Corner
- 3 Zen Decks 1
- 4 Garden Deck 2
- 5 Outdoor Fitness 3
- 6 Swing Garden
- 7 Tennis Court
- 8 Recreational Court

OTHERS

- A Residential Entrance (Level 3)
- B Water Tanks (Level 12,17,31,32)
- C Genset (Level 6)
- D Substation (Level 1)
- E Bin Centre (Level 1)
- F Cooling Towers (Level 4)

UNIT PLAN

LEVEL 6-11

CREEKSIDE

- 3-Bedroom Type C6-C8P
- 4-Bedroom Type D1, D1P

LEVEL 6-16

THE RESERVE RESIDENCES

- 1-Bedroom Type A1, A2
- 2-Bedroom Type B1-B7A
- 2-Bedroom + Study Type B8-B9A
- 3-Bedroom Type C1-C4

HORIZON

- 3-Bedroom Flexi Type C9-C10P
- 4-Bedroom Type D2-D4



UNIT PLAN

LEVEL 18-30

THE RESERVE RESIDENCES

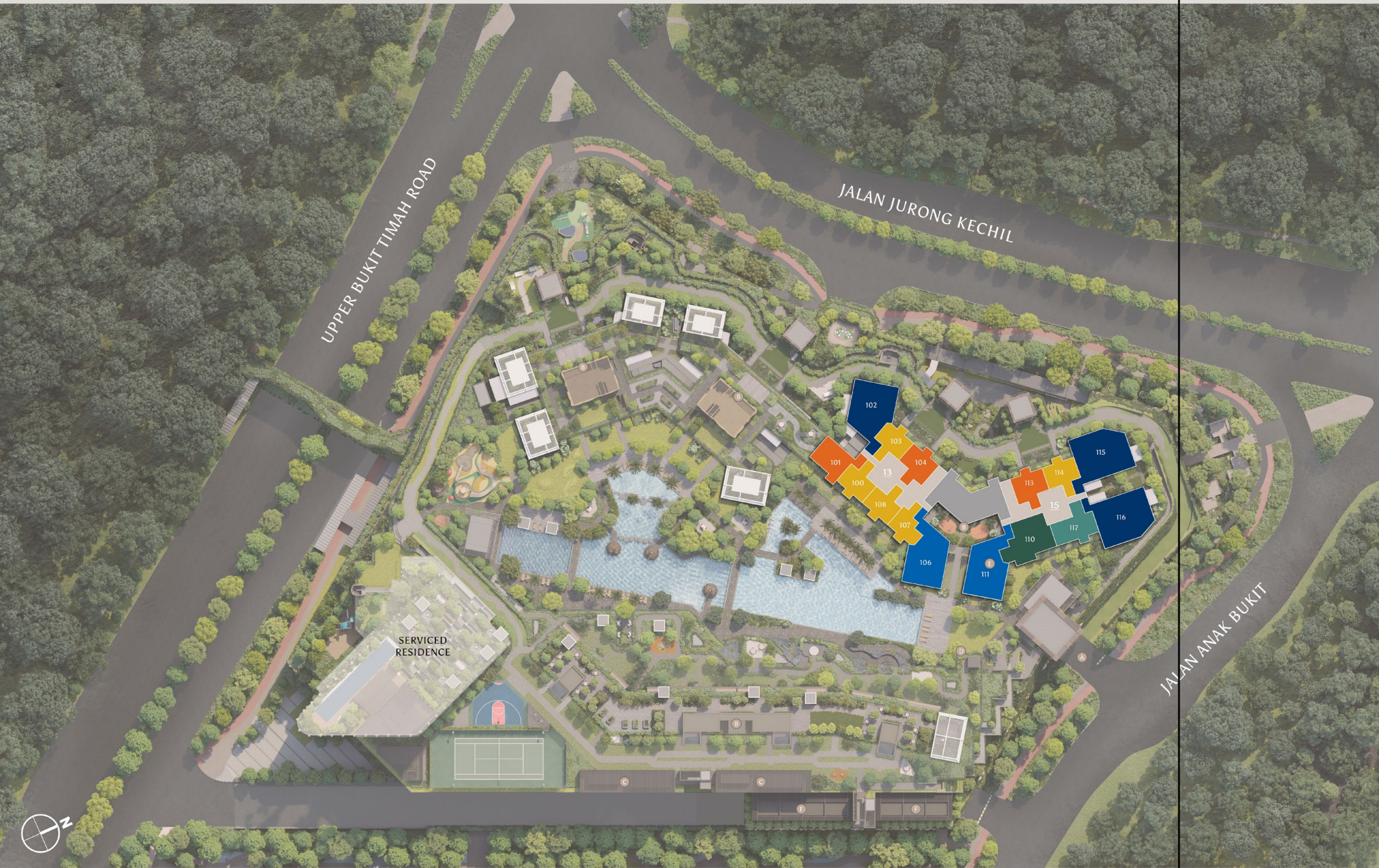
- 2-Bedroom
Type B1-B7A
- 2-Bedroom + Study
Type B8-B9A
- 3-Bedroom
Type C1-C4
- 3-Bedroom + Study
Type C5

HORIZON

- 3-Bedroom Flexi
Type C9-C10P
- 4-Bedroom
Type D2-D4

OTHERS

- | | | |
|--|---|--|
| A Residential Entrance (Level 3) | B Water Tanks (Level 12,17,31,32) | C Genset (Level 6) |
| D Substation (Level 1) | E Bin Centre (Level 1) | F Cooling Towers (Level 4) |



UNIT PLAN

LEVEL 31

THE RESERVE RESIDENCES

- 2-Bedroom
Type B1-B7A
- 2-Bedroom + Study
Type B8-B9A
- 3-Bedroom
Type C1
- 3-Bedroom + Study
Type C5

HORIZON

- 3-Bedroom Flexi
Type C9-C10P
- 4-Bedroom
Type D2-D4

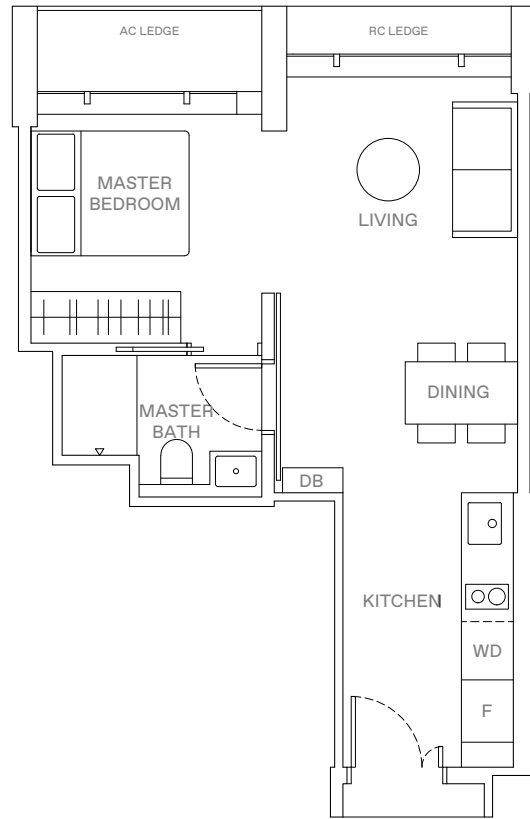
OTHERS

- | | | |
|---|--|---|
| A Residential Entrance (Level 3) | B Water Tanks (Level 12,17,31,32) | C Genset (Level 6) |
| D Substation (Level 1) | E Bin Centre (Level 1) | F Cooling Towers (Level 4) |

1-BEDROOM . TYPE A1

41 sqm | 441 sqft

9 Jalan Anak Bukit: #06-80 to #16-80, #05-84 to #16-84
 #06-81 to #16-81, #06-90 to #16-90 (Mirrored)
 11 Jalan Anak Bukit: #06-91 to #16-91



LEGEND

- WD WASHER-DRYER
- W/D WASHER AND DRYER
- F FRIDGE
- DB DISTRIBUTION BOX



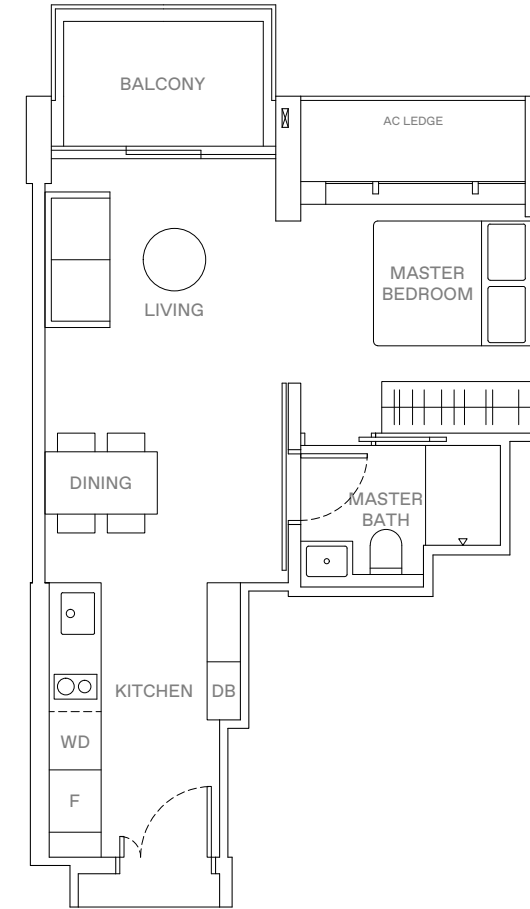
AREA INCLUDES AIR-CON (A/C) LEDGE, BALCONY AND STRATA VOID AREA WHERE APPLICABLE. THE PLANS ARE SUBJECT TO CHANGE AS MAY BE APPROVED BY RELEVANT AUTHORITIES. ALL FLOOR PLANS ARE APPROXIMATE MEASUREMENTS ONLY AND ARE SUBJECT TO GOVERNMENT RE-SURVEY. THE BALCONY SHALL NOT BE ENCLOSED UNLESS WITH THE APPROVED BALCONY SCREEN. FOR AN ILLUSTRATION OF THE APPROVED BALCONY SCREEN, PLEASE REFER TO THE DIAGRAM ANNEXED HERETO AS "ANNEXURE A".



1-BEDROOM . TYPE A2

46 sqm | 495 sqft

9 Jalan Anak Bukit: #06-85 to #16-85
 #06-86 to #16-86 (Mirrored)
 11 Jalan Anak Bukit: #06-95 to #16-95
 #06-96 to #16-96 (Mirrored)



LEGEND

- WD WASHER-DRYER
- W/D WASHER AND DRYER
- F FRIDGE
- DB DISTRIBUTION BOX



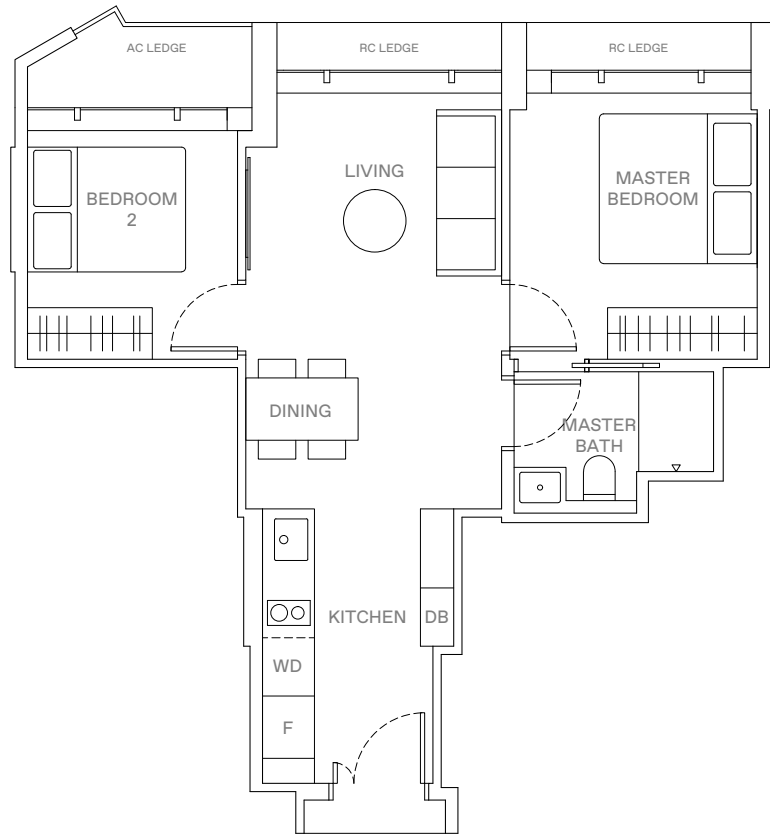
AREA INCLUDES AIR-CON (A/C) LEDGE, BALCONY AND STRATA VOID AREA WHERE APPLICABLE. THE PLANS ARE SUBJECT TO CHANGE AS MAY BE APPROVED BY RELEVANT AUTHORITIES. ALL FLOOR PLANS ARE APPROXIMATE MEASUREMENTS ONLY AND ARE SUBJECT TO GOVERNMENT RE-SURVEY. THE BALCONY SHALL NOT BE ENCLOSED UNLESS WITH THE APPROVED BALCONY SCREEN. FOR AN ILLUSTRATION OF THE APPROVED BALCONY SCREEN, PLEASE REFER TO THE DIAGRAM ANNEXED HERETO AS "ANNEXURE A".



2 - BEDROOM . TYPE B1

52 sqm | 560 sqft

11 Jalan Anak Bukit: #06-99 to #16-99



LEGEND

WD WASHER-DRYER
W/D WASHER AND DRYER
F FRIDGE
DB DISTRIBUTION BOX



AREA INCLUDES AIR-CON (A/C) LEDGE, BALCONY AND STRATA VOID AREA WHERE APPLICABLE. THE PLANS ARE SUBJECT TO CHANGE AS MAY BE APPROVED BY RELEVANT AUTHORITIES. ALL FLOOR PLANS ARE APPROXIMATE MEASUREMENTS ONLY AND ARE SUBJECT TO GOVERNMENT RE-SURVEY. THE BALCONY SHALL NOT BE ENCLOSED UNLESS WITH THE APPROVED BALCONY SCREEN. FOR AN ILLUSTRATION OF THE APPROVED BALCONY SCREEN, PLEASE REFER TO THE DIAGRAM ANNEXED HERETO AS "ANNEXURE A".

KEY PLAN
THIS KEY PLAN IS NOT TO SCALE



2 - BEDROOM . TYPE B2

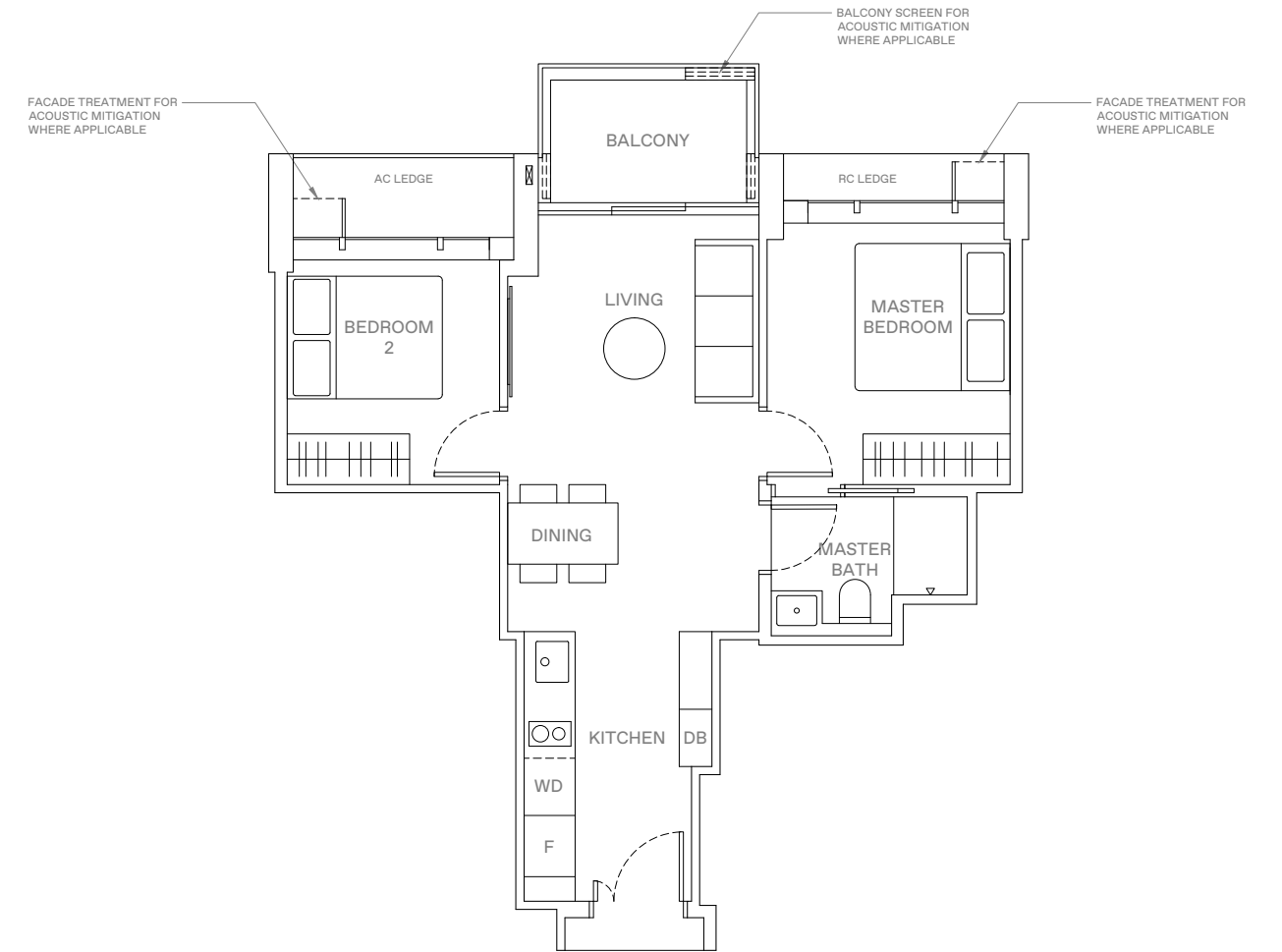
57 sqm | 614 sqft

13 Jalan Anak Bukit: #06-100 to #16-100 (Mirrored)

#06-108 to #16-108

15 Jalan Anak Bukit: #06-109 to #16-109 (Mirrored)

#06-117 to #16-117



LEGEND

WD WASHER-DRYER
W/D WASHER AND DRYER
F FRIDGE
DB DISTRIBUTION BOX



AREA INCLUDES AIR-CON (A/C) LEDGE, BALCONY AND STRATA VOID AREA WHERE APPLICABLE. THE PLANS ARE SUBJECT TO CHANGE AS MAY BE APPROVED BY RELEVANT AUTHORITIES. ALL FLOOR PLANS ARE APPROXIMATE MEASUREMENTS ONLY AND ARE SUBJECT TO GOVERNMENT RE-SURVEY. THE BALCONY SHALL NOT BE ENCLOSED UNLESS WITH THE APPROVED BALCONY SCREEN. FOR AN ILLUSTRATION OF THE APPROVED BALCONY SCREEN, PLEASE REFER TO THE DIAGRAM ANNEXED HERETO AS "ANNEXURE A".

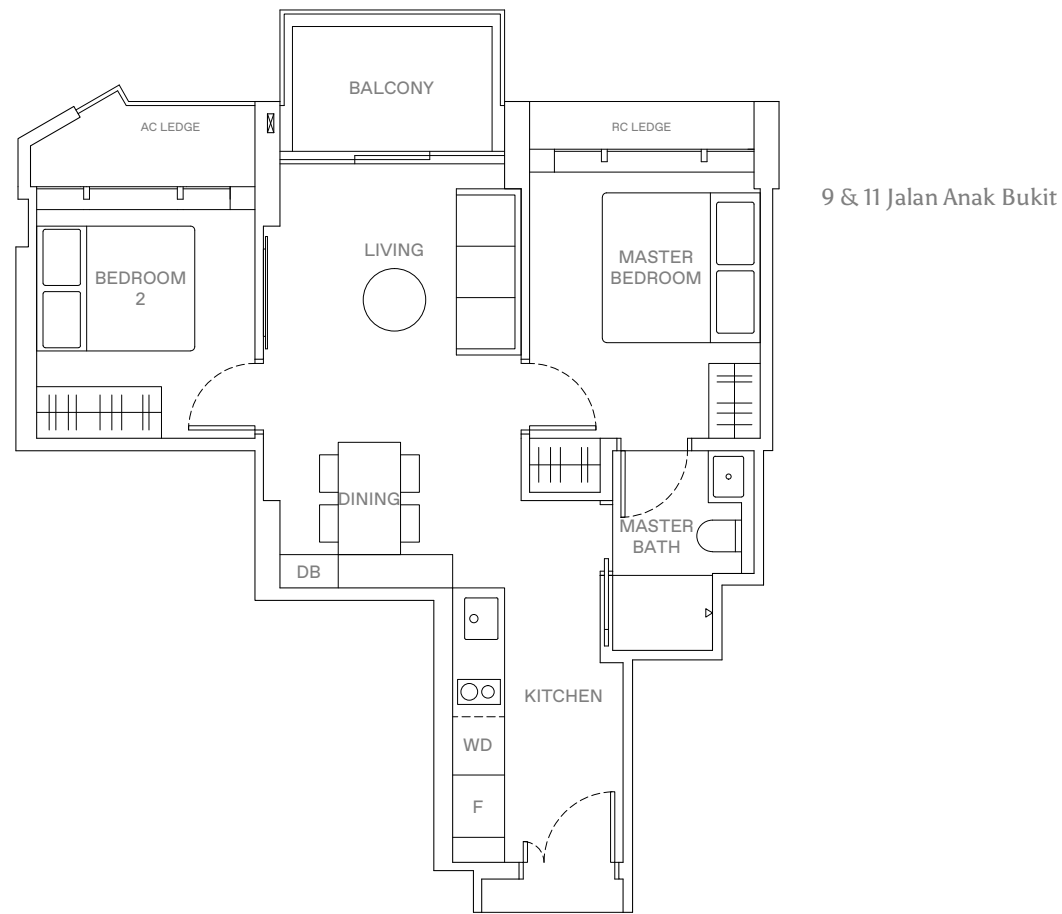
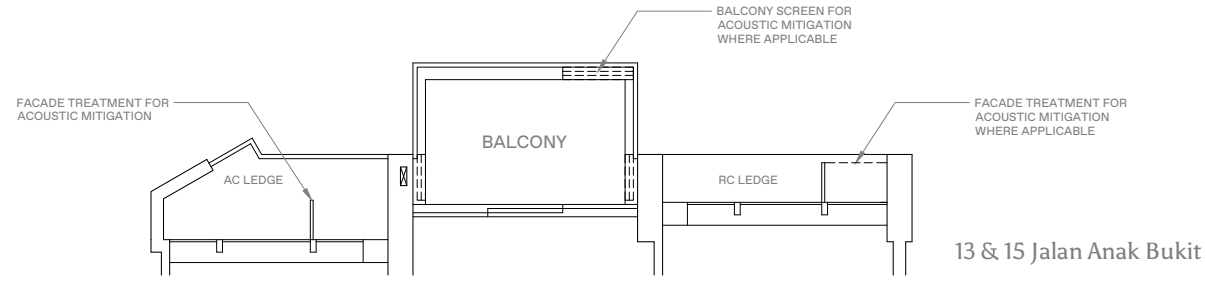
KEY PLAN
THIS KEY PLAN IS NOT TO SCALE



2-BEDROOM . TYPE B3

57 sqm | 614 sqft

9 Jalan Anak Bukit: #05-87 to #16-87 (Mirrored)
 11 Jalan Anak Bukit: #05-94 to #16-94
 13 Jalan Anak Bukit: #06-107 to #16-107
 15 Jalan Anak Bukit: #06-110 to #16-110 (Mirrored)



LEGEND

WD WASHER-DRYER
 W/D WASHER AND DRYER
 F FRIDGE
 DB DISTRIBUTION BOX



AREA INCLUDES AIR-CON (A/C) LEDGE, BALCONY AND STRATA VOID AREA WHERE APPLICABLE. THE PLANS ARE SUBJECT TO CHANGE AS MAY BE APPROVED BY RELEVANT AUTHORITIES. ALL FLOOR PLANS ARE APPROXIMATE MEASUREMENTS ONLY AND ARE SUBJECT TO GOVERNMENT RE-SURVEY. THE BALCONY SHALL NOT BE ENCLOSED UNLESS WITH THE APPROVED BALCONY SCREEN. FOR AN ILLUSTRATION OF THE APPROVED BALCONY SCREEN, PLEASE REFER TO THE DIAGRAM ANNEXED HERETO AS "ANNEXURE A".

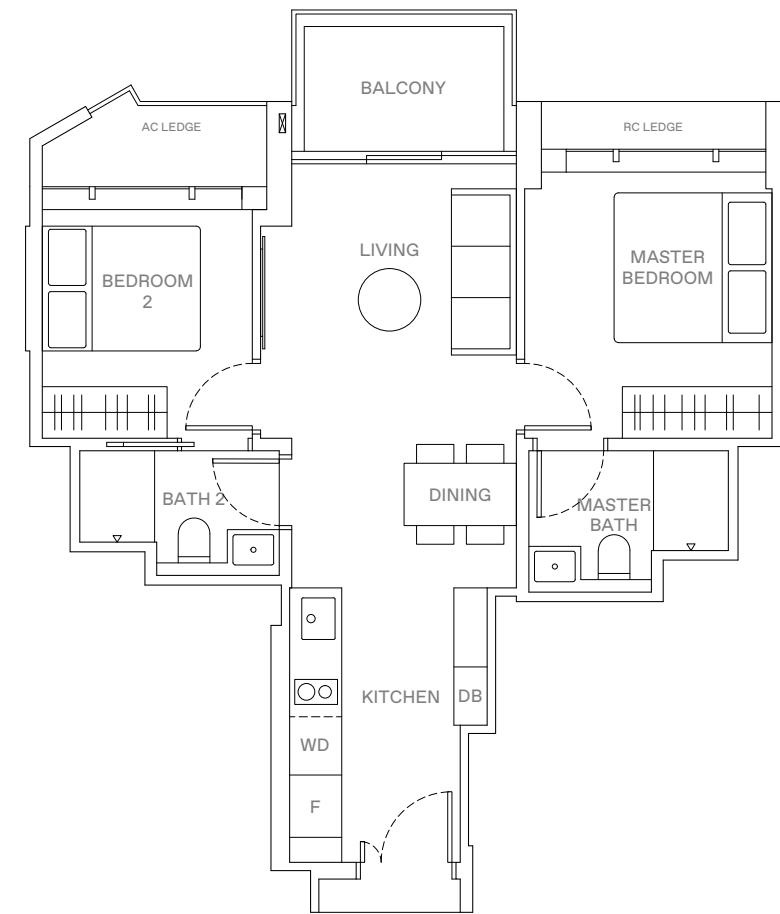
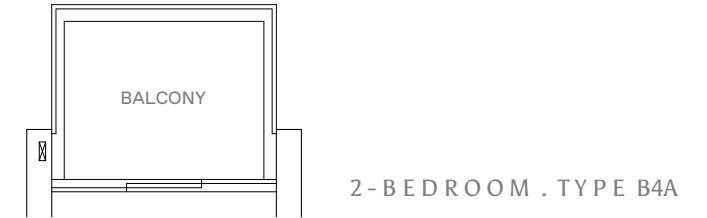
KEY PLAN
 THIS KEY PLAN IS NOT TO SCALE



2-BEDROOM . TYPE B4/B4A

60 sqm | 646 sqft (B4), 61 sqm | 657 sqft (B4A)

13 Jalan Anak Bukit: #06-103 to #16-103 (B4)
 #18-103 to #31-103 (B4A)



LEGEND

WD WASHER-DRYER
 W/D WASHER AND DRYER
 F FRIDGE
 DB DISTRIBUTION BOX



AREA INCLUDES AIR-CON (A/C) LEDGE, BALCONY AND STRATA VOID AREA WHERE APPLICABLE. THE PLANS ARE SUBJECT TO CHANGE AS MAY BE APPROVED BY RELEVANT AUTHORITIES. ALL FLOOR PLANS ARE APPROXIMATE MEASUREMENTS ONLY AND ARE SUBJECT TO GOVERNMENT RE-SURVEY. THE BALCONY SHALL NOT BE ENCLOSED UNLESS WITH THE APPROVED BALCONY SCREEN. FOR AN ILLUSTRATION OF THE APPROVED BALCONY SCREEN, PLEASE REFER TO THE DIAGRAM ANNEXED HERETO AS "ANNEXURE A".

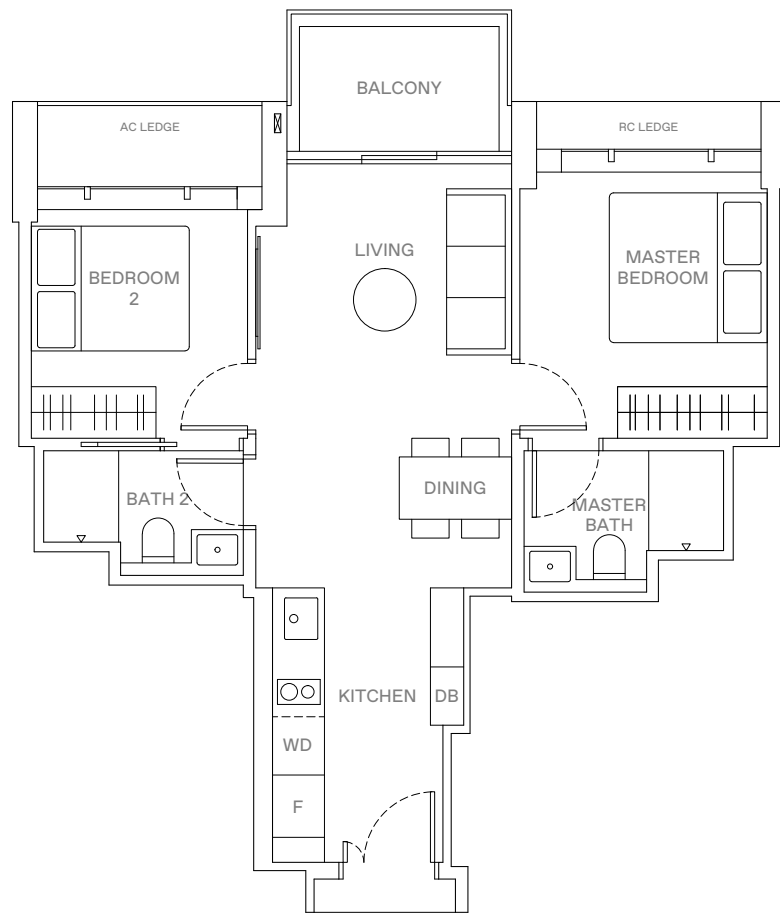
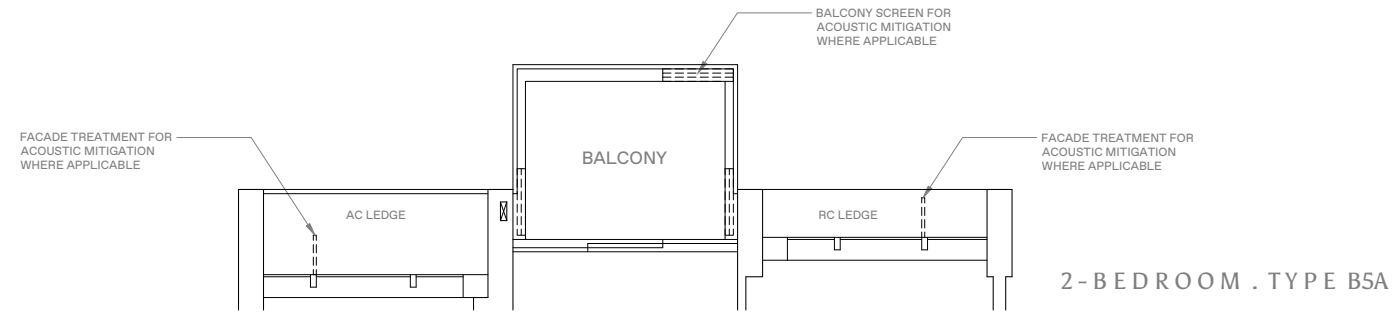
KEY PLAN
 THIS KEY PLAN IS NOT TO SCALE



2 - BEDROOM . TYPE B5/B5A

61 sqm | 657 sqft (B5), 62 sqm | 667 sqft (B5A)

13 Jalan Anak Bukit: #06-104 to #16-104 (B5, Mirrored)
 #18-100 to #31-100 (B5A, Mirrored)
 #18-108 to #31-108 (B5A)
 15 Jalan Anak Bukit: #06-113 to #16-113 (B5)
 #06-114 to #16-114 (B5, Mirrored)
 #18-114 to #31-114 (B5A, Mirrored)



LEGEND

WD WASHER-DRYER
 W/D WASHER AND DRYER
 F FRIDGE
 DB DISTRIBUTION BOX



AREA INCLUDES AIR-CON (A/C) LEDGE, BALCONY AND STRATA VOID AREA WHERE APPLICABLE. THE PLANS ARE SUBJECT TO CHANGE AS MAY BE APPROVED BY RELEVANT AUTHORITIES. ALL FLOOR PLANS ARE APPROXIMATE MEASUREMENTS ONLY AND ARE SUBJECT TO GOVERNMENT RE-SURVEY. THE BALCONY SHALL NOT BE ENCLOSED UNLESS WITH THE APPROVED BALCONY SCREEN. FOR AN ILLUSTRATION OF THE APPROVED BALCONY SCREEN, PLEASE REFER TO THE DIAGRAM ANNEXED HERETO AS "ANNEXURE A".

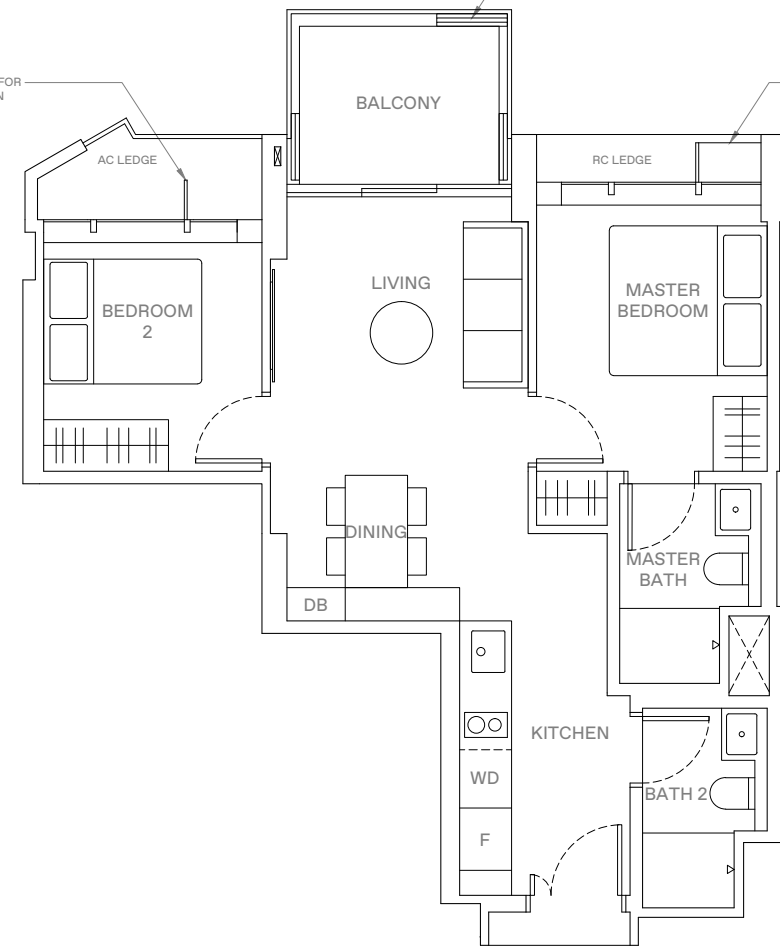
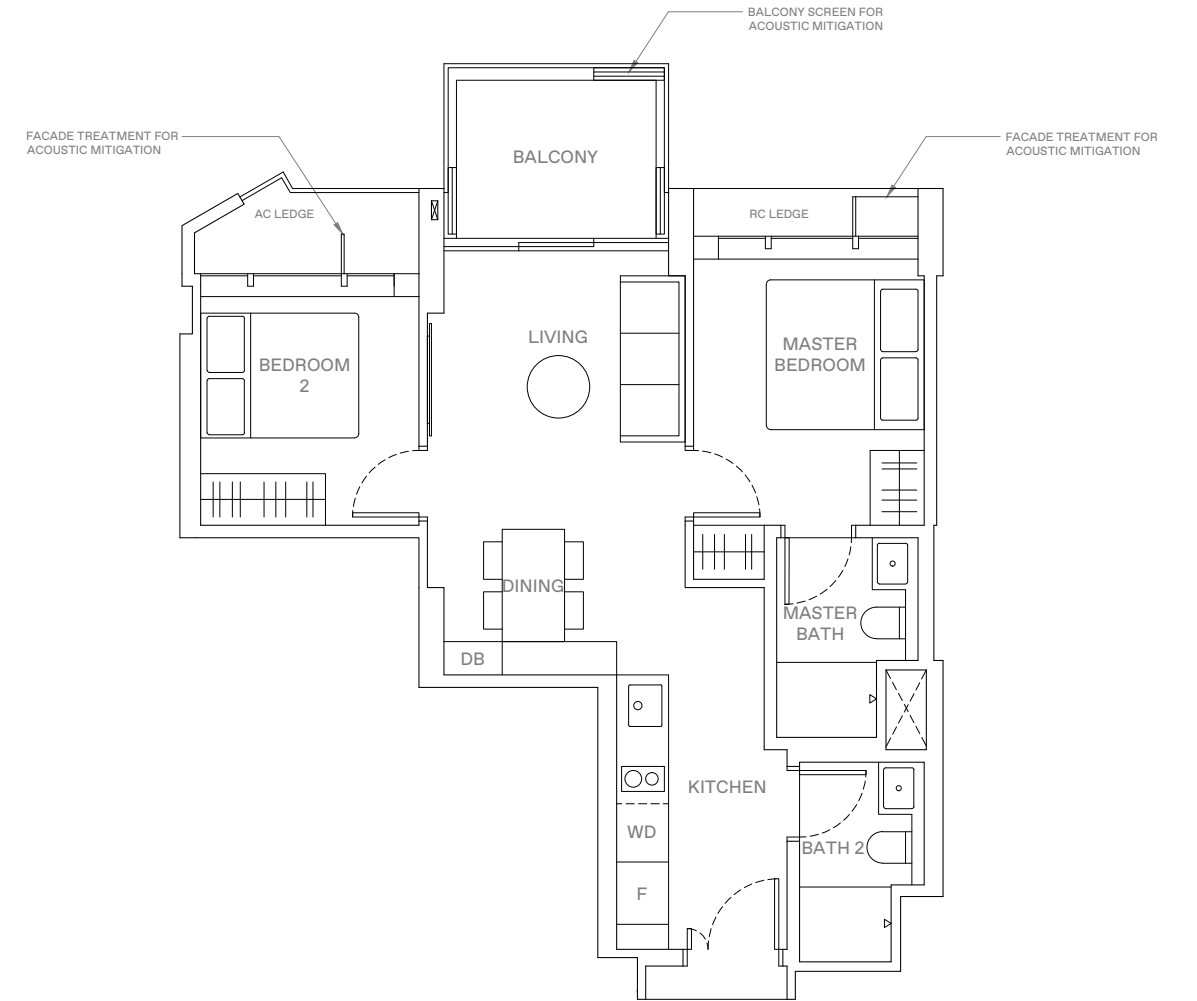
KEY PLAN
 THIS KEY PLAN IS NOT TO SCALE



2 - BEDROOM . TYPE B6

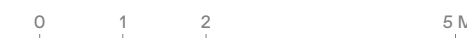
62 sqm | 667 sqft

13 Jalan Anak Bukit: #18-107 to #31-107



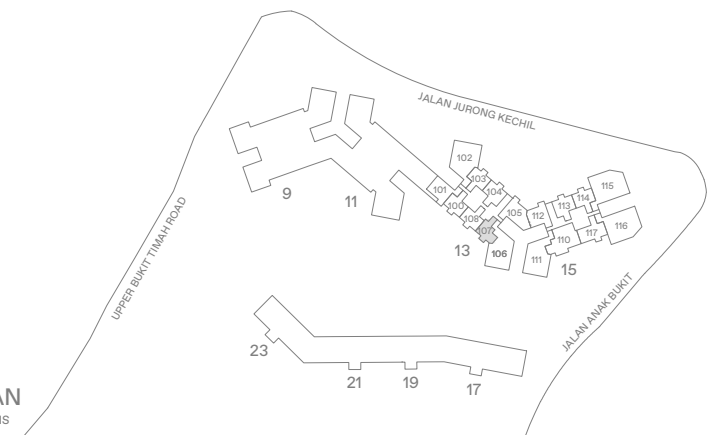
LEGEND

WD WASHER-DRYER
 W/D WASHER AND DRYER
 F FRIDGE
 DB DISTRIBUTION BOX



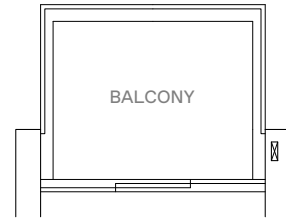
AREA INCLUDES AIR-CON (A/C) LEDGE, BALCONY AND STRATA VOID AREA WHERE APPLICABLE. THE PLANS ARE SUBJECT TO CHANGE AS MAY BE APPROVED BY RELEVANT AUTHORITIES. ALL FLOOR PLANS ARE APPROXIMATE MEASUREMENTS ONLY AND ARE SUBJECT TO GOVERNMENT RE-SURVEY. THE BALCONY SHALL NOT BE ENCLOSED UNLESS WITH THE APPROVED BALCONY SCREEN. FOR AN ILLUSTRATION OF THE APPROVED BALCONY SCREEN, PLEASE REFER TO THE DIAGRAM ANNEXED HERETO AS "ANNEXURE A".

KEY PLAN
 THIS KEY PLAN IS NOT TO SCALE

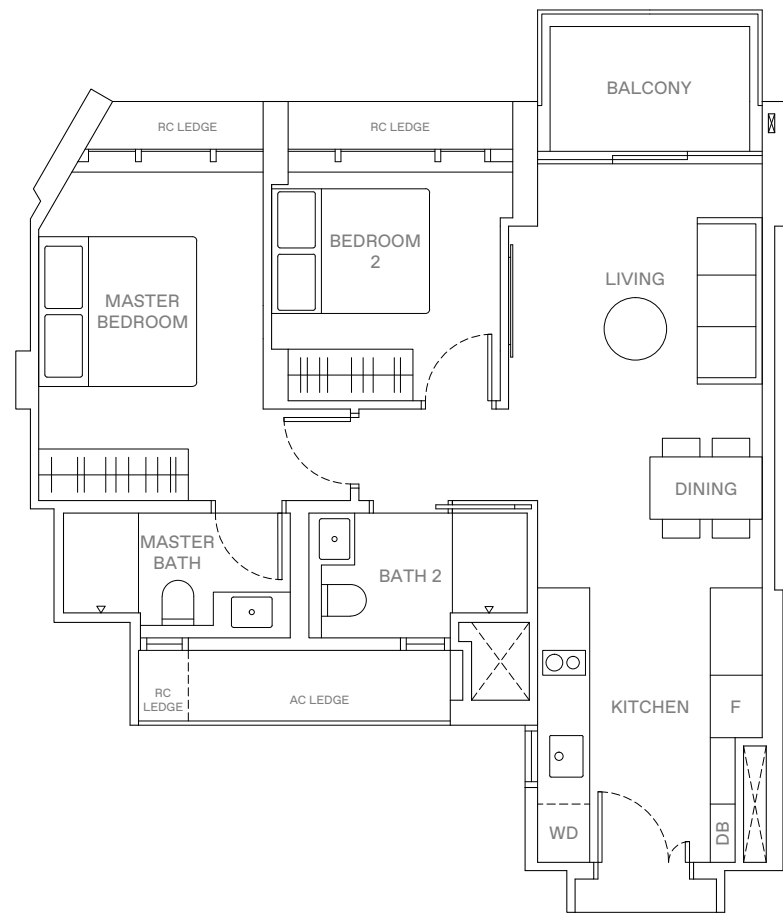


2 - BEDROOM . TYPE B7/B7A
68 sqm | 732 sqft (B7), 69 sqm | 743 sqft (B7A)

9 Jalan Anak Bukit: #06-89 to #16-89 (B7)
15 Jalan Anak Bukit: #06-112 to #16-112 (B7)
#18-112 to #30-112 (B7A)



2 - BEDROOM . TYPE B7A



LEGEND

- WD WASHER-DRYER
- W/D WASHER AND DRYER
- F FRIDGE
- DB DISTRIBUTION BOX



AREA INCLUDES AIR-CON (A/C) LEDGE, BALCONY AND STRATA VOID AREA WHERE APPLICABLE. THE PLANS ARE SUBJECT TO CHANGE AS MAY BE APPROVED BY RELEVANT AUTHORITIES. ALL FLOOR PLANS ARE APPROXIMATE MEASUREMENTS ONLY AND ARE SUBJECT TO GOVERNMENT RE-SURVEY. THE BALCONY SHALL NOT BE ENCLOSED UNLESS WITH THE APPROVED BALCONY SCREEN. FOR AN ILLUSTRATION OF THE APPROVED BALCONY SCREEN, PLEASE REFER TO THE DIAGRAM ANNEXED HERETO AS "ANNEXURE A".



2 - BEDROOM + STUDY . TYPE B8
67 sqm | 721 sqft

13 Jalan Anak Bukit: #18-104 to #31-104 (Mirrored)
15 Jalan Anak Bukit: #18-113 to #31-113



LEGEND

- WD WASHER-DRYER
- W/D WASHER AND DRYER
- F FRIDGE
- DB DISTRIBUTION BOX



AREA INCLUDES AIR-CON (A/C) LEDGE, BALCONY AND STRATA VOID AREA WHERE APPLICABLE. THE PLANS ARE SUBJECT TO CHANGE AS MAY BE APPROVED BY RELEVANT AUTHORITIES. ALL FLOOR PLANS ARE APPROXIMATE MEASUREMENTS ONLY AND ARE SUBJECT TO GOVERNMENT RE-SURVEY. THE BALCONY SHALL NOT BE ENCLOSED UNLESS WITH THE APPROVED BALCONY SCREEN. FOR AN ILLUSTRATION OF THE APPROVED BALCONY SCREEN, PLEASE REFER TO THE DIAGRAM ANNEXED HERETO AS "ANNEXURE A".

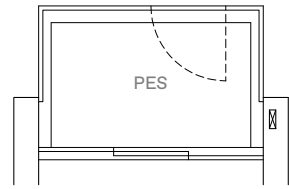


2-BEDROOM + STUDY . TYPE B9/B9P

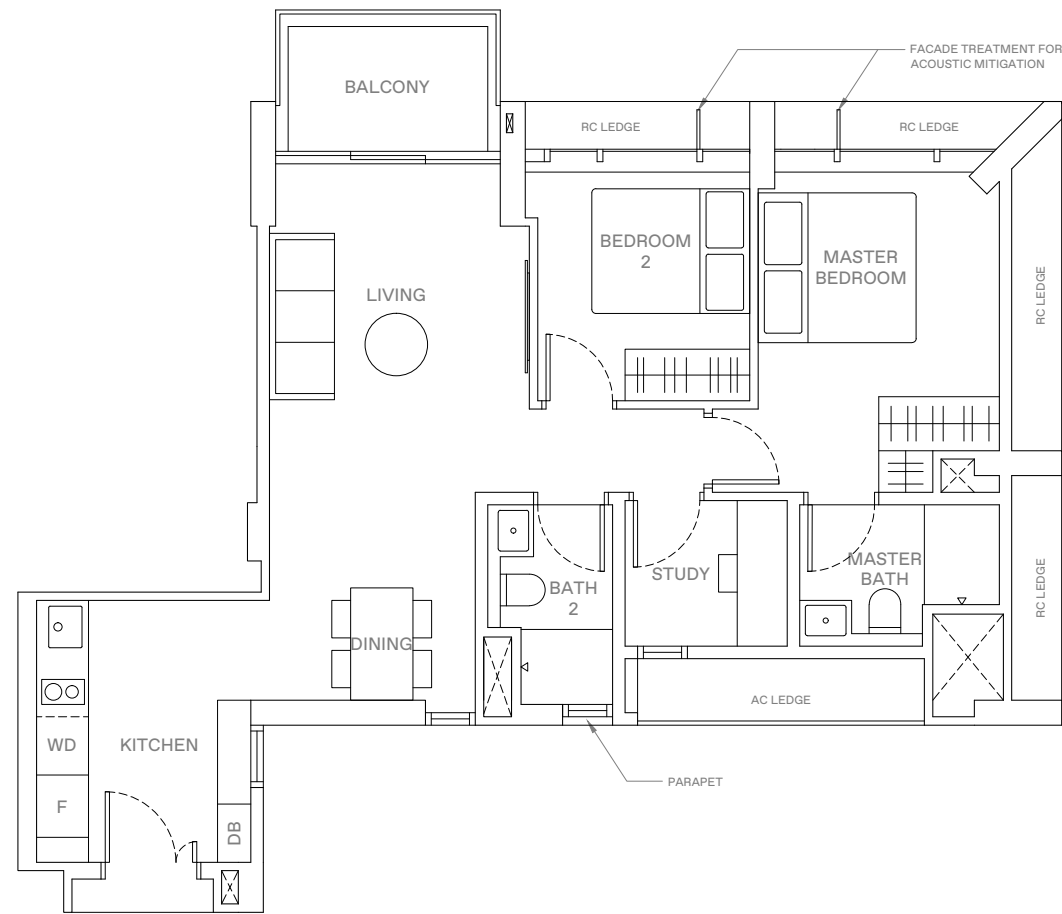
74 sqm | 797 sqft (B9, B9P)

13 Jalan Anak Bukit: #05-101 (B9P)

#06-101 to #16-101 (B9)

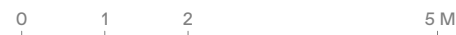


2-BEDROOM . TYPE B9P



LEGEND

WD	WASHER-DRYER
W/D	WASHER AND DRYER
F	FRIDGE
DB	DISTRIBUTION BOX



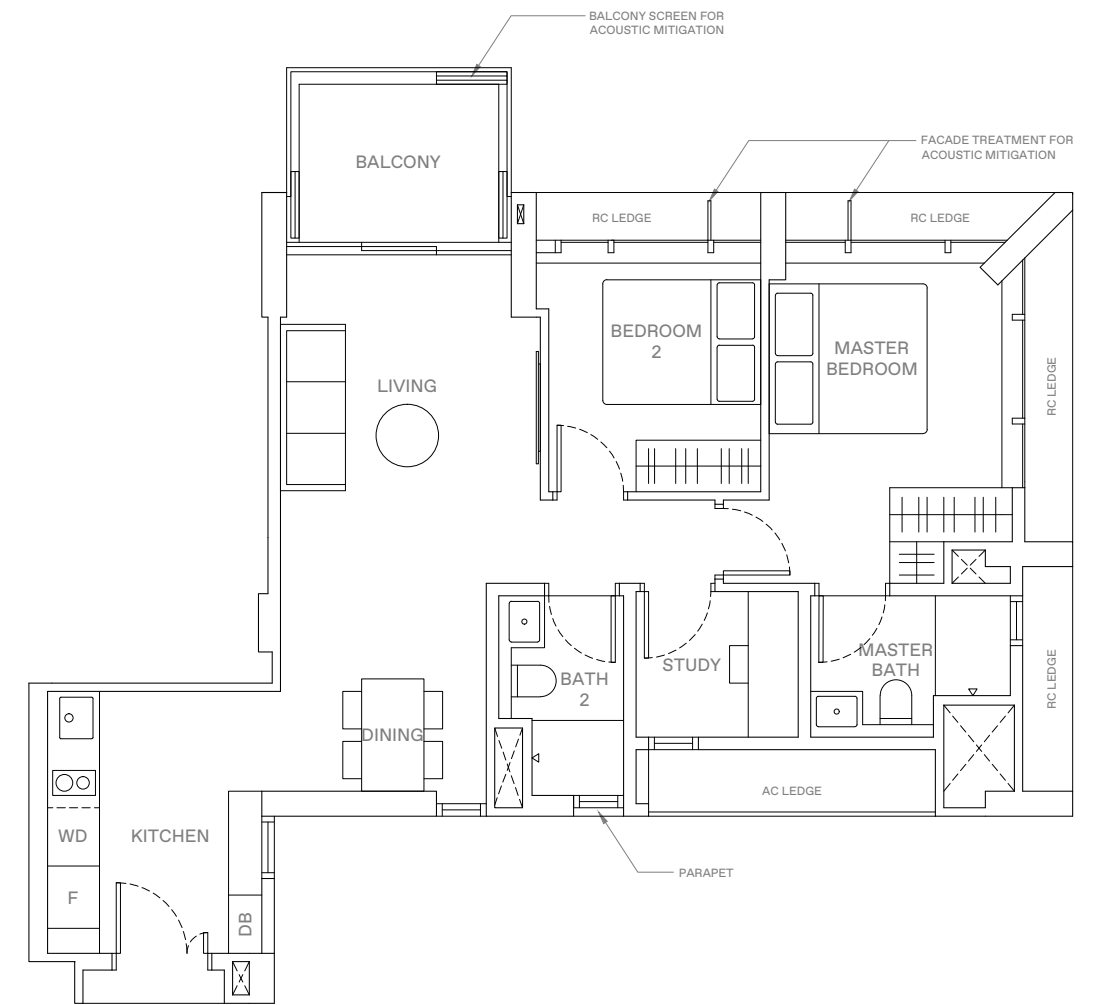
AREA INCLUDES AIR-CON (A/C) LEDGE, BALCONY AND STRATA VOID AREA WHERE APPLICABLE. THE PLANS ARE SUBJECT TO CHANGE AS MAY BE APPROVED BY RELEVANT AUTHORITIES. ALL FLOOR PLANS ARE APPROXIMATE MEASUREMENTS ONLY AND ARE SUBJECT TO GOVERNMENT RE-SURVEY. THE BALCONY SHALL NOT BE ENCLOSED UNLESS WITH THE APPROVED BALCONY SCREEN. FOR AN ILLUSTRATION OF THE APPROVED BALCONY SCREEN, PLEASE REFER TO THE DIAGRAM ANNEXED HERETO AS "ANNEXURE A".



2-BEDROOM + STUDY . TYPE B9A

75 sqm | 807 sqft

13 Jalan Anak Bukit: #18-101 to #31-101

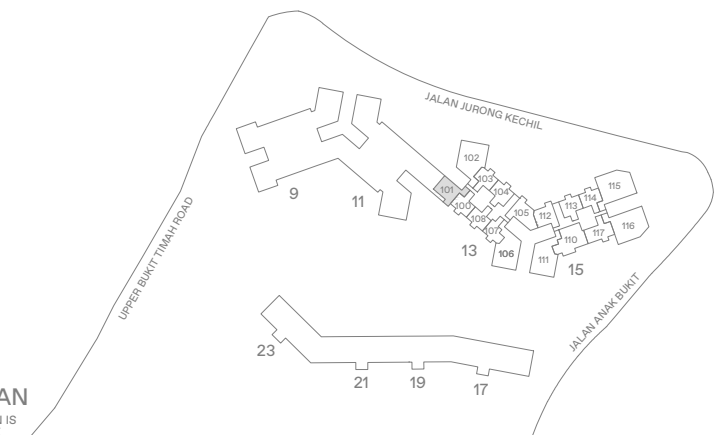


LEGEND

WD	WASHER-DRYER
W/D	WASHER AND DRYER
F	FRIDGE
DB	DISTRIBUTION BOX



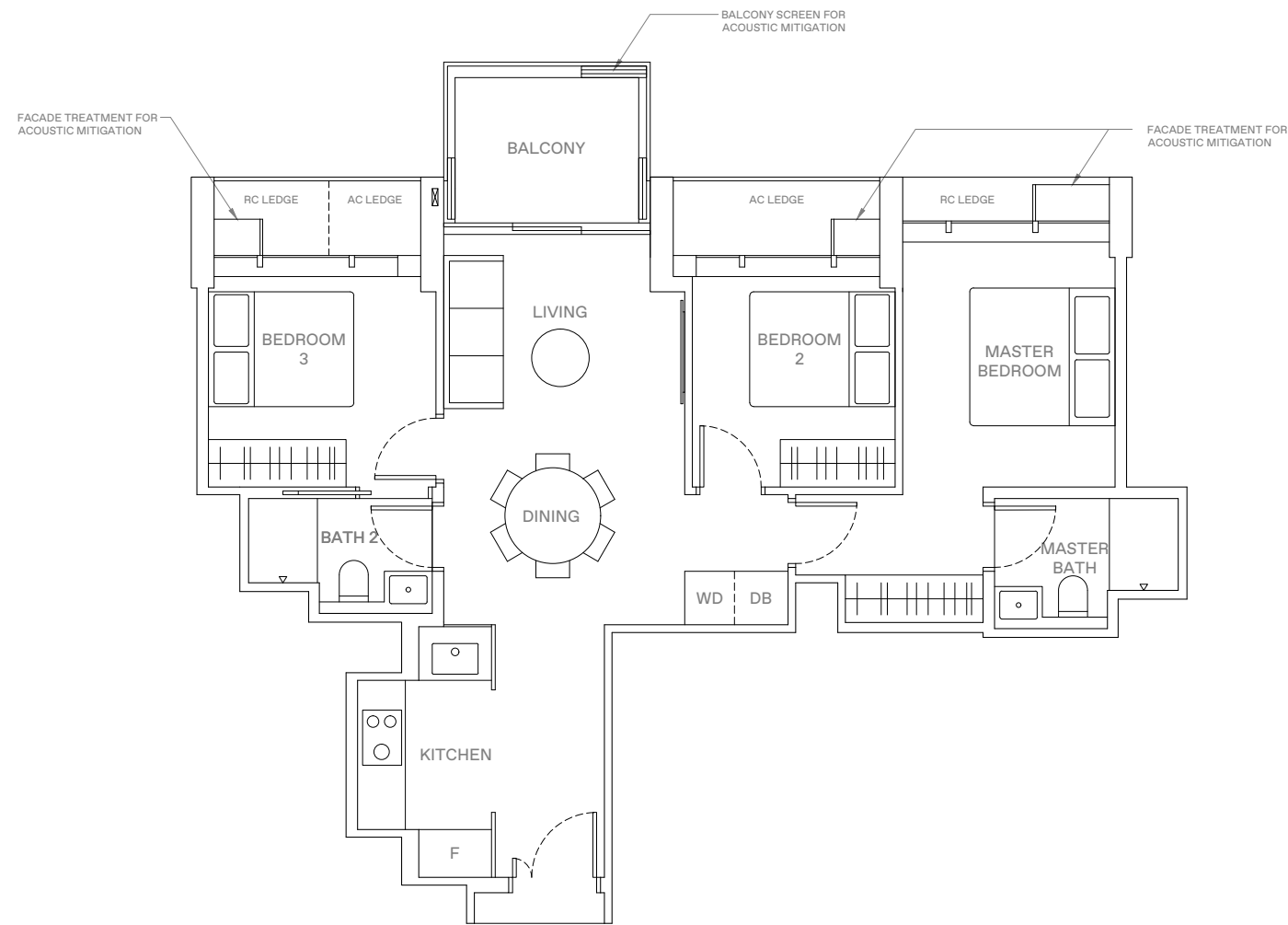
AREA INCLUDES AIR-CON (A/C) LEDGE, BALCONY AND STRATA VOID AREA WHERE APPLICABLE. THE PLANS ARE SUBJECT TO CHANGE AS MAY BE APPROVED BY RELEVANT AUTHORITIES. ALL FLOOR PLANS ARE APPROXIMATE MEASUREMENTS ONLY AND ARE SUBJECT TO GOVERNMENT RE-SURVEY. THE BALCONY SHALL NOT BE ENCLOSED UNLESS WITH THE APPROVED BALCONY SCREEN. FOR AN ILLUSTRATION OF THE APPROVED BALCONY SCREEN, PLEASE REFER TO THE DIAGRAM ANNEXED HERETO AS "ANNEXURE A".



3-BEDROOM . TYPE C1

82 sqm | 883 sqft

15 Jalan Anak Bukit: #18-117 to #31-117

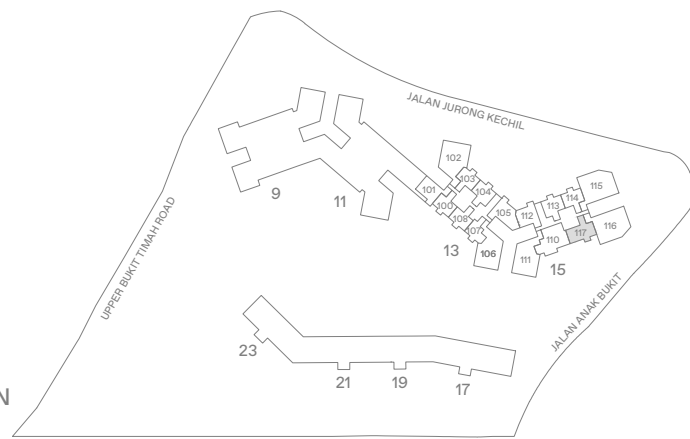


LEGEND

- WD WASHER-DRYER
- W/D WASHER AND DRYER
- F FRIDGE
- DB DISTRIBUTION BOX



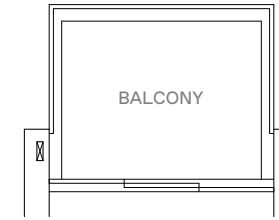
AREA INCLUDES AIR-CON (A/C) LEDGE, BALCONY AND STRATA VOID AREA WHERE APPLICABLE. THE PLANS ARE SUBJECT TO CHANGE AS MAY BE APPROVED BY RELEVANT AUTHORITIES. ALL FLOOR PLANS ARE APPROXIMATE MEASUREMENTS ONLY AND ARE SUBJECT TO GOVERNMENT RE-SURVEY. THE BALCONY SHALL NOT BE ENCLOSED UNLESS WITH THE APPROVED BALCONY SCREEN. FOR AN ILLUSTRATION OF THE APPROVED BALCONY SCREEN, PLEASE REFER TO THE DIAGRAM ANNEXED HERETO AS "ANNEXURE A".



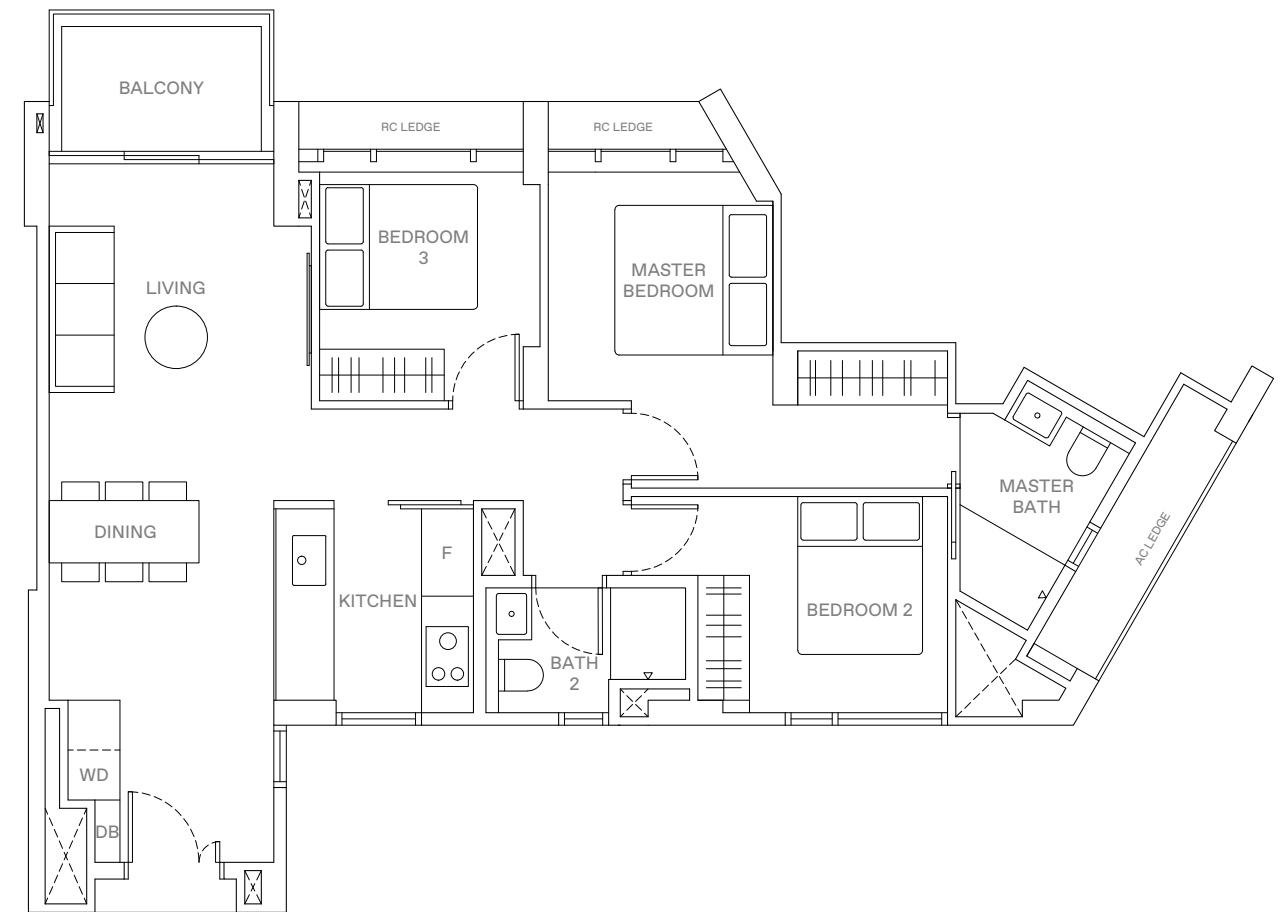
3-BEDROOM . TYPE C2/C2A

87 sqm | 936 sqft (C2), 88 sqm | 947 sqft (C2A)

11 Jalan Anak Bukit: #06-92 to #16-92 (C2)
 13 Jalan Anak Bukit: #06-105 to #16-105 (C2)
 #18-105 to #30-105 (C2A)



3-BEDROOM . TYPE C2A



LEGEND

- WD WASHER-DRYER
- W/D WASHER AND DRYER
- F FRIDGE
- DB DISTRIBUTION BOX

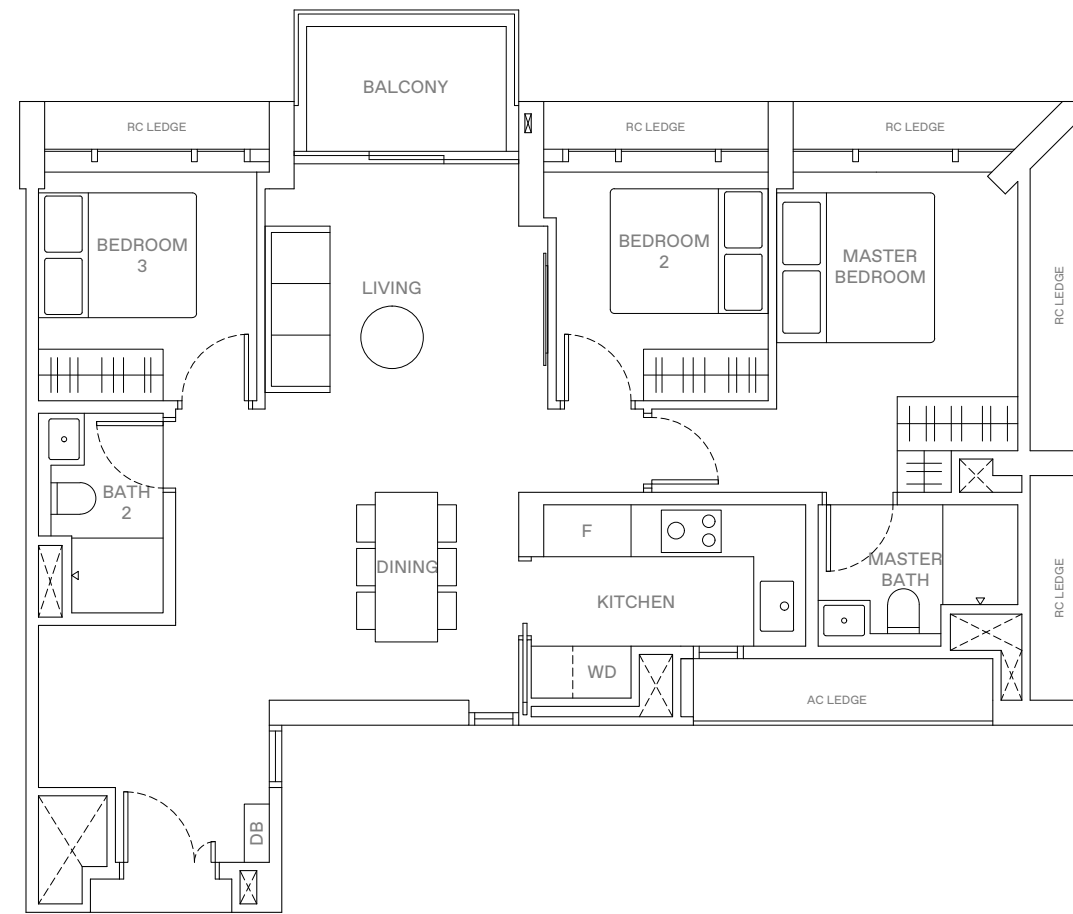


AREA INCLUDES AIR-CON (A/C) LEDGE, BALCONY AND STRATA VOID AREA WHERE APPLICABLE. THE PLANS ARE SUBJECT TO CHANGE AS MAY BE APPROVED BY RELEVANT AUTHORITIES. ALL FLOOR PLANS ARE APPROXIMATE MEASUREMENTS ONLY AND ARE SUBJECT TO GOVERNMENT RE-SURVEY. THE BALCONY SHALL NOT BE ENCLOSED UNLESS WITH THE APPROVED BALCONY SCREEN. FOR AN ILLUSTRATION OF THE APPROVED BALCONY SCREEN, PLEASE REFER TO THE DIAGRAM ANNEXED HERETO AS "ANNEXURE A".



3-BEDROOM . TYPE C3
89 sqm | 958 sqft

11 Jalan Anak Bukit: #06-97 to #16-97



LEGEND

- WD WASHER-DRYER
- W/D WASHER AND DRYER
- F FRIDGE
- DB DISTRIBUTION BOX

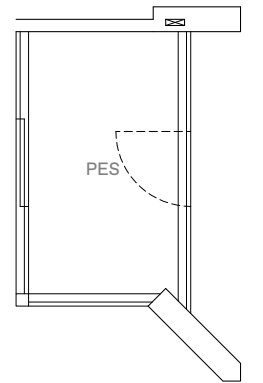
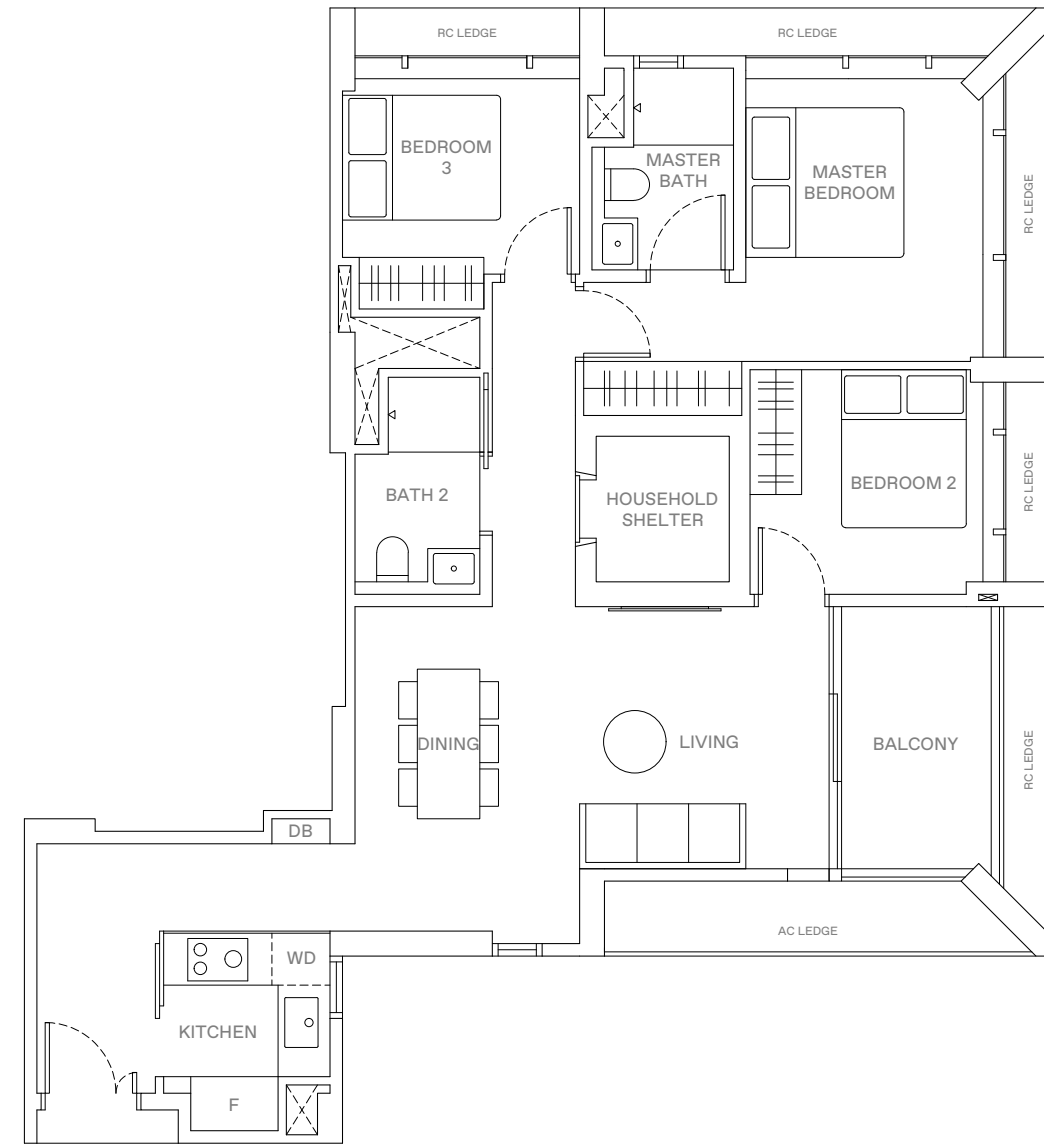


AREA INCLUDES AIR-CON (A/C) LEDGE, BALCONY AND STRATA VOID AREA WHERE APPLICABLE. THE PLANS ARE SUBJECT TO CHANGE AS MAY BE APPROVED BY RELEVANT AUTHORITIES. ALL FLOOR PLANS ARE APPROXIMATE MEASUREMENTS ONLY AND ARE SUBJECT TO GOVERNMENT RE-SURVEY. THE BALCONY SHALL NOT BE ENCLOSED UNLESS WITH THE APPROVED BALCONY SCREEN. FOR AN ILLUSTRATION OF THE APPROVED BALCONY SCREEN, PLEASE REFER TO THE DIAGRAM ANNEXED HERETO AS "ANNEXURE A".



3-BEDROOM . TYPE C4/C4P
97 sqm | 1,044 sqft (C4, C4P)

9 Jalan Anak Bukit: #05-82 (C4P)
#06-82 to #16-82 (C4)
#05-83 to #16-83 (C4, Mirrored)



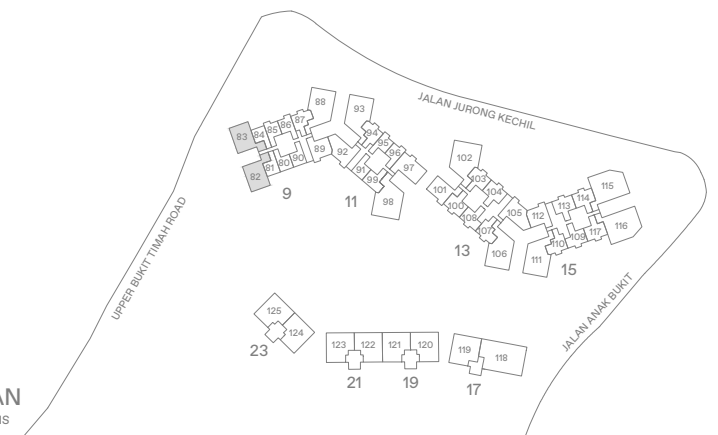
3-BEDROOM . TYPE C4P

LEGEND

- WD WASHER-DRYER
- W/D WASHER AND DRYER
- F FRIDGE
- DB DISTRIBUTION BOX



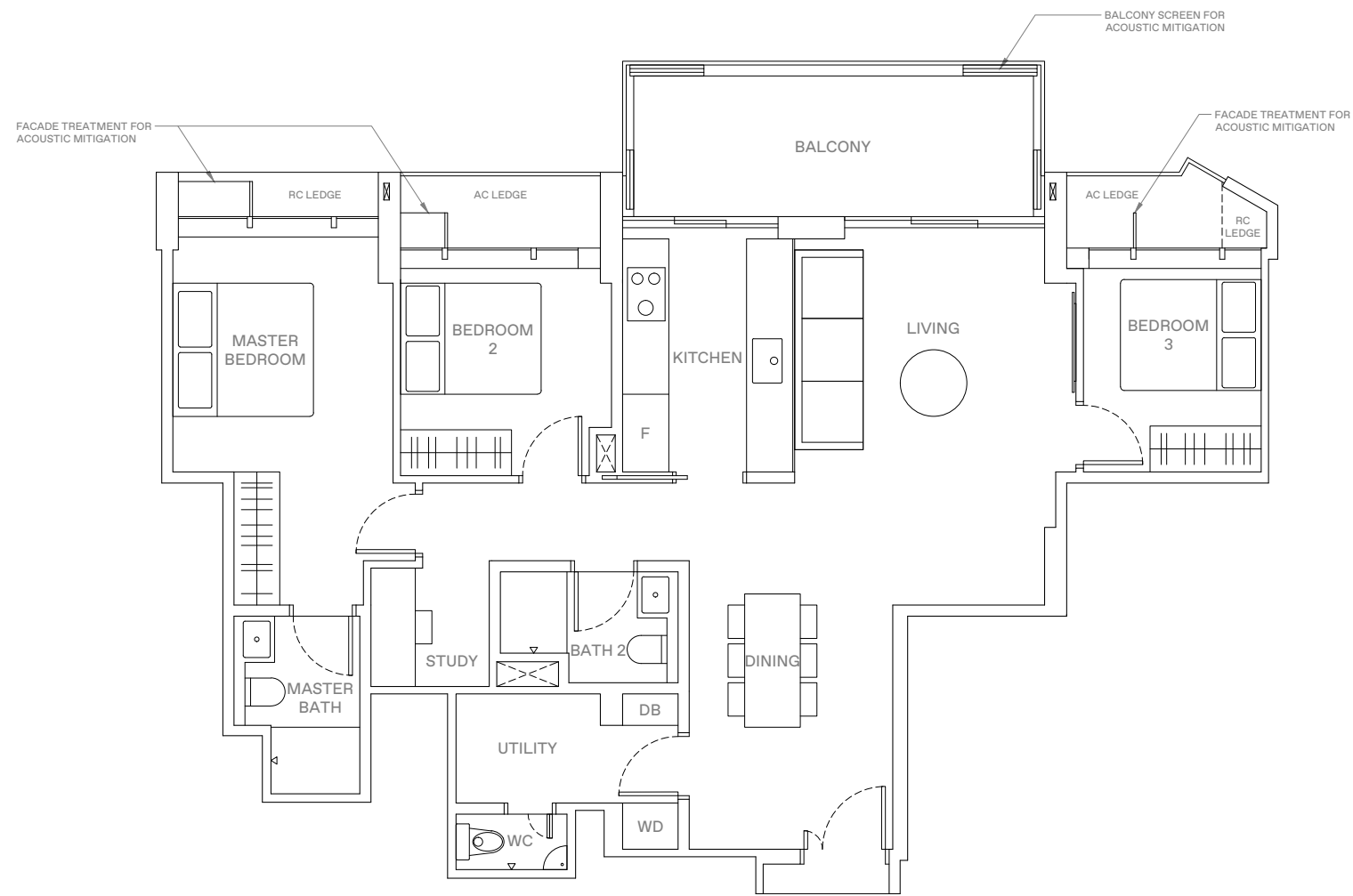
AREA INCLUDES AIR-CON (A/C) LEDGE, BALCONY AND STRATA VOID AREA WHERE APPLICABLE. THE PLANS ARE SUBJECT TO CHANGE AS MAY BE APPROVED BY RELEVANT AUTHORITIES. ALL FLOOR PLANS ARE APPROXIMATE MEASUREMENTS ONLY AND ARE SUBJECT TO GOVERNMENT RE-SURVEY. THE BALCONY SHALL NOT BE ENCLOSED UNLESS WITH THE APPROVED BALCONY SCREEN. FOR AN ILLUSTRATION OF THE APPROVED BALCONY SCREEN, PLEASE REFER TO THE DIAGRAM ANNEXED HERETO AS "ANNEXURE A".



3-BEDROOM + STUDY . TYPE C5

113 sqm | 1,216 sqft

15 Jalan Anak Bukit: #18-110 to #31-110



HORIZON

FLOOR PLANS

LEGEND

- WD WASHER-DRYER
- W/D WASHER AND DRYER
- F FRIDGE
- DB DISTRIBUTION BOX



AREA INCLUDES AIR-CON (A/C) LEDGE, BALCONY AND STRATA VOID AREA WHERE APPLICABLE. THE PLANS ARE SUBJECT TO CHANGE AS MAY BE APPROVED BY RELEVANT AUTHORITIES. ALL FLOOR PLANS ARE APPROXIMATE MEASUREMENTS ONLY AND ARE SUBJECT TO GOVERNMENT RE-SURVEY. THE BALCONY SHALL NOT BE ENCLOSED UNLESS WITH THE APPROVED BALCONY SCREEN. FOR AN ILLUSTRATION OF THE APPROVED BALCONY SCREEN, PLEASE REFER TO THE DIAGRAM ANNEXED HERETO AS "ANNEXURE A".

KEY PLAN
THIS KEY PLAN IS NOT TO SCALE



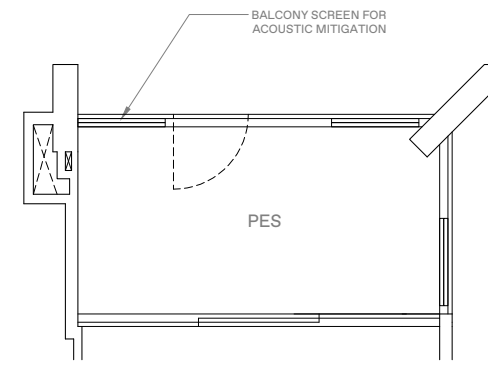
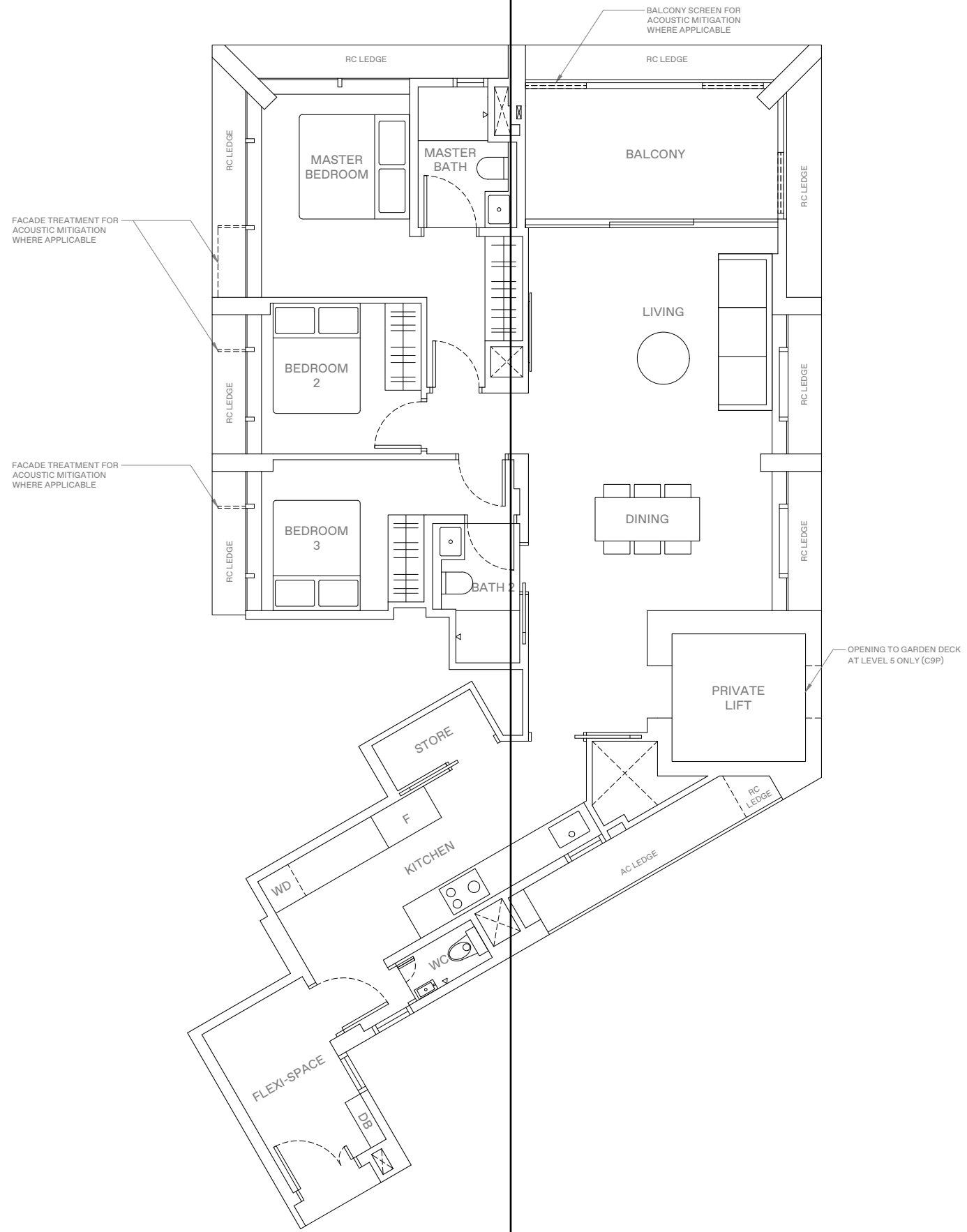
3-BEDROOM . TYPE C9/C9P

122 sqm | 1,313 sqft (C9, C9P)

9 Jalan Anak Bukit: #05-88 to #16-88 (C9)

15 Jalan Anak Bukit: #05-111 (C9P)

#06-111 to #16-111, #18-111 to #31-111 (C9)



3-BEDROOM . TYPE C9P

LEGEND

- WD WASHER-DRYER
- W/D WASHER AND DRYER
- F FRIDGE
- DB DISTRIBUTION BOX



AREA INCLUDES AIR-CON (A/C) LEDGE, BALCONY AND STRATA VOID AREA WHERE APPLICABLE. THE PLANS ARE SUBJECT TO CHANGE AS MAY BE APPROVED BY RELEVANT AUTHORITIES. ALL FLOOR PLANS ARE APPROXIMATE MEASUREMENTS ONLY AND ARE SUBJECT TO GOVERNMENT RE-SURVEY. THE BALCONY SHALL NOT BE ENCLOSED UNLESS WITH THE APPROVED BALCONY SCREEN. FOR AN ILLUSTRATION OF THE APPROVED BALCONY SCREEN, PLEASE REFER TO THE DIAGRAM ANNEXED HERETO AS 'ANNEXURE A'.



3-BEDROOM . TYPE C10/C10P

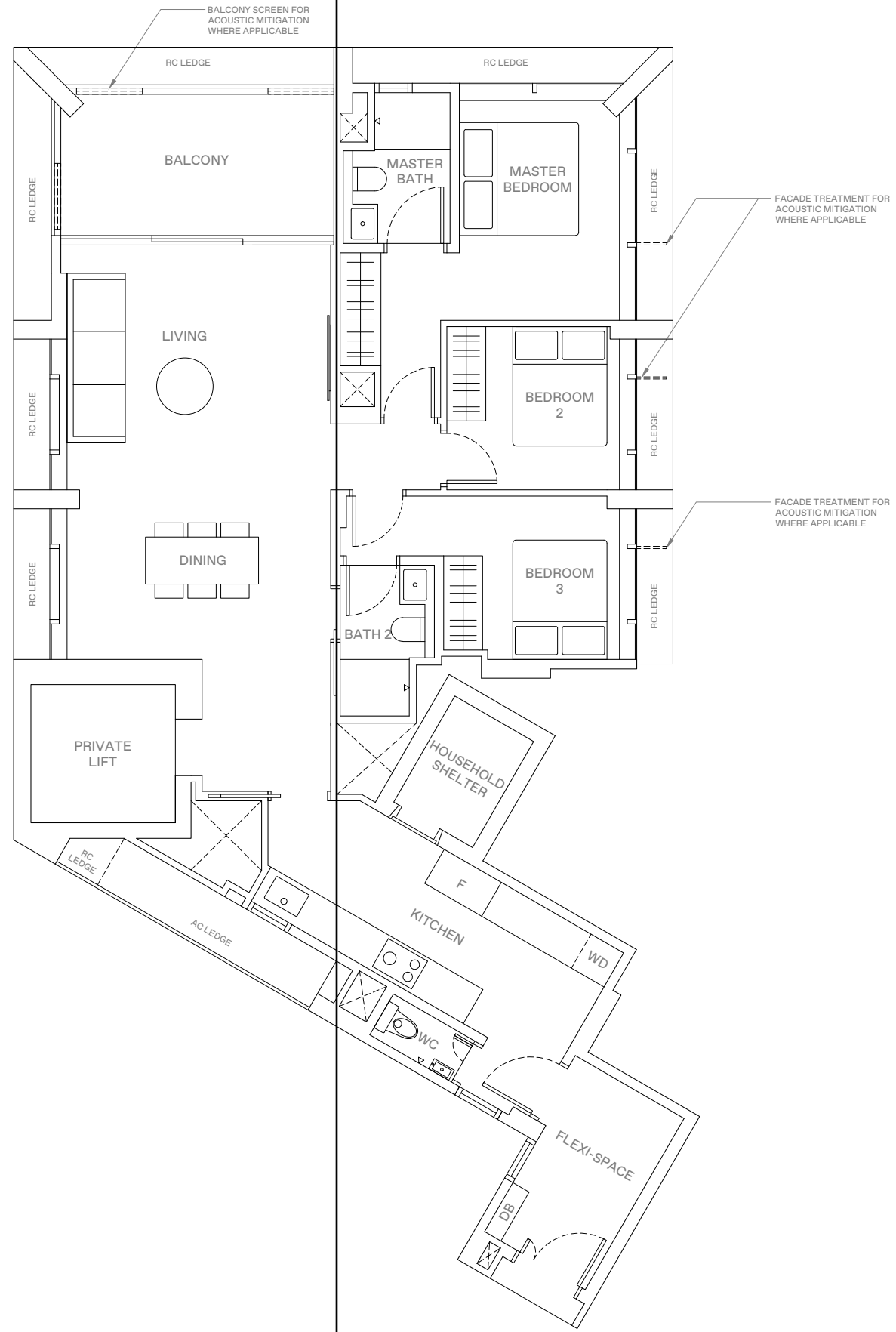
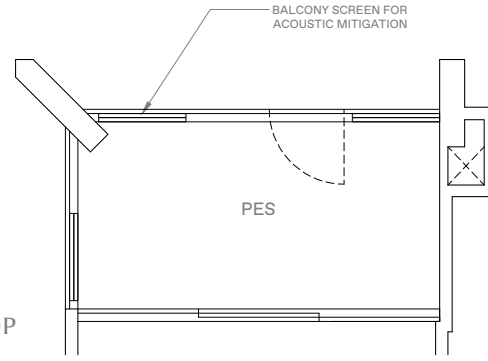
123 sqm | 1,324 sqft (C10, C10P)

11 Jalan Anak Bukit: #05-93 to #16-93 (C10)

13 Jalan Anak Bukit: #05-106 (C10P)

#06-106 to #16-106, #18-106 to #31-106 (C10)

3-BEDROOM . TYPE C10P



LEGEND

WD	WASHER-DRYER
W/D	WASHER AND DRYER
F	FRIDGE
DB	DISTRIBUTION BOX

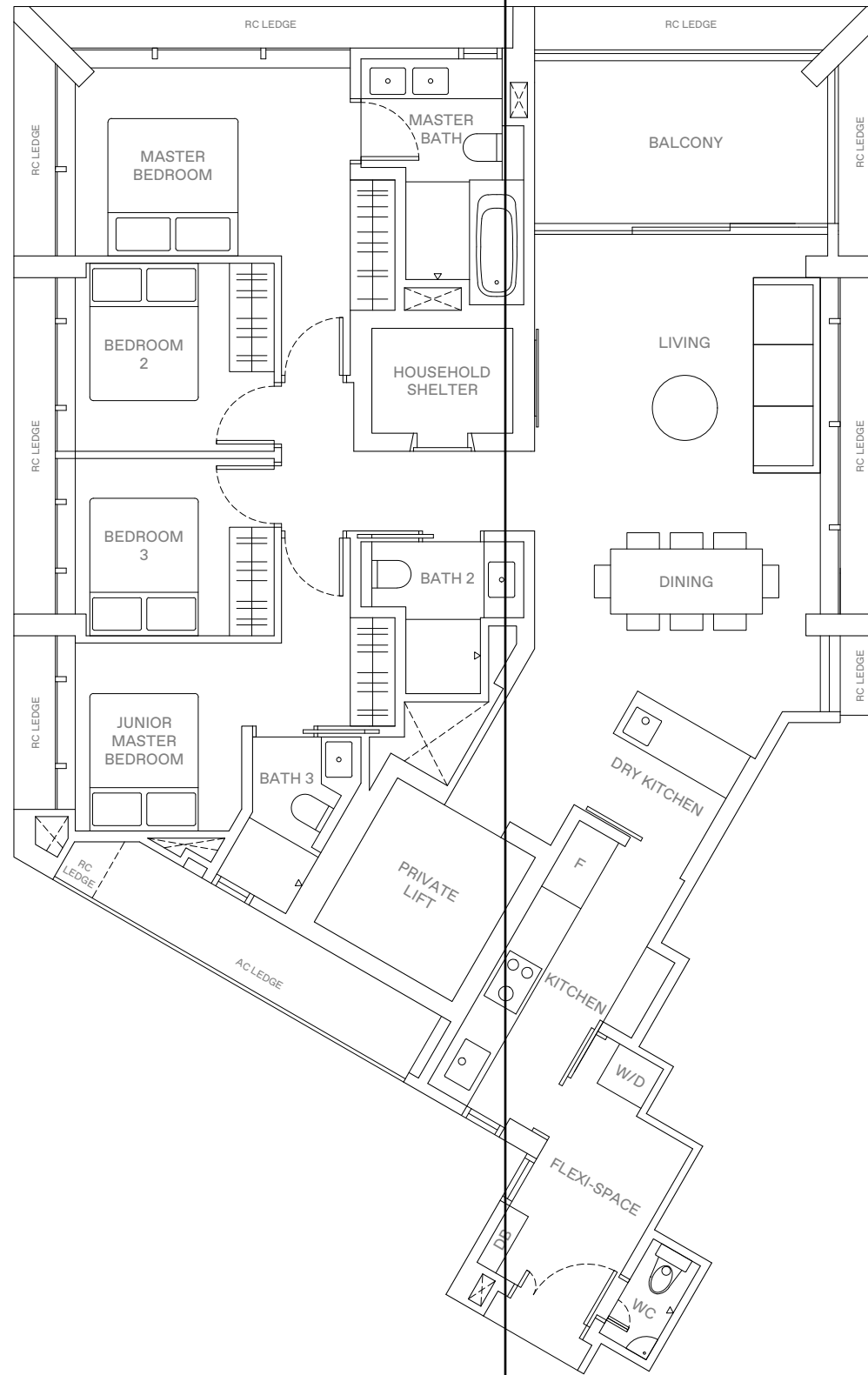


AREA INCLUDES AIR-CON (A/C) LEDGE, BALCONY AND STRATA VOID AREA WHERE APPLICABLE. THE PLANS ARE SUBJECT TO CHANGE AS MAY BE APPROVED BY RELEVANT AUTHORITIES. ALL FLOOR PLANS ARE APPROXIMATE MEASUREMENTS ONLY AND ARE SUBJECT TO GOVERNMENT RE-SURVEY. THE BALCONY SHALL NOT BE ENCLOSED UNLESS WITH THE APPROVED BALCONY SCREEN. FOR AN ILLUSTRATION OF THE APPROVED BALCONY SCREEN, PLEASE REFER TO THE DIAGRAM ANNEXED HERETO AS 'ANNEXURE A'.



4 - BEDROOM . TYPE D2
137 sqm | 1,475 sqft

11 Jalan Anak Bukit: #06-98 to #16-98
13 Jalan Anak Bukit: #06-102 to #16-102, #18-102 to #31-102

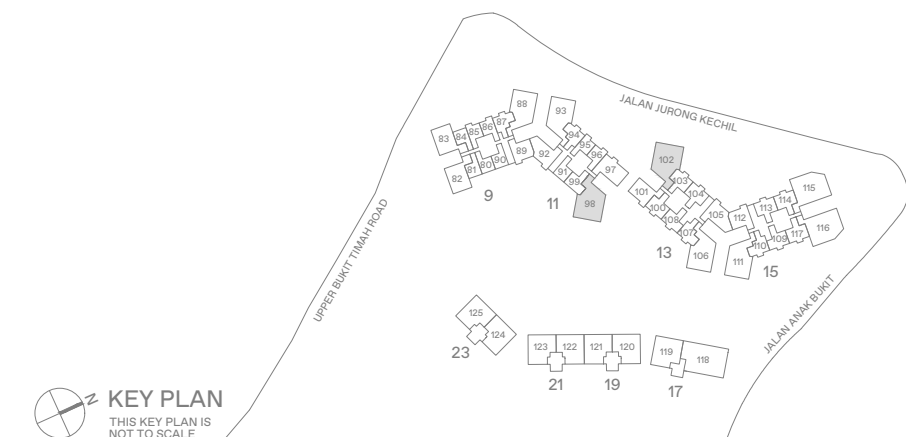


LEGEND

- WD WASHER-DRYER
- W/D WASHER AND DRYER
- F FRIDGE
- DB DISTRIBUTION BOX



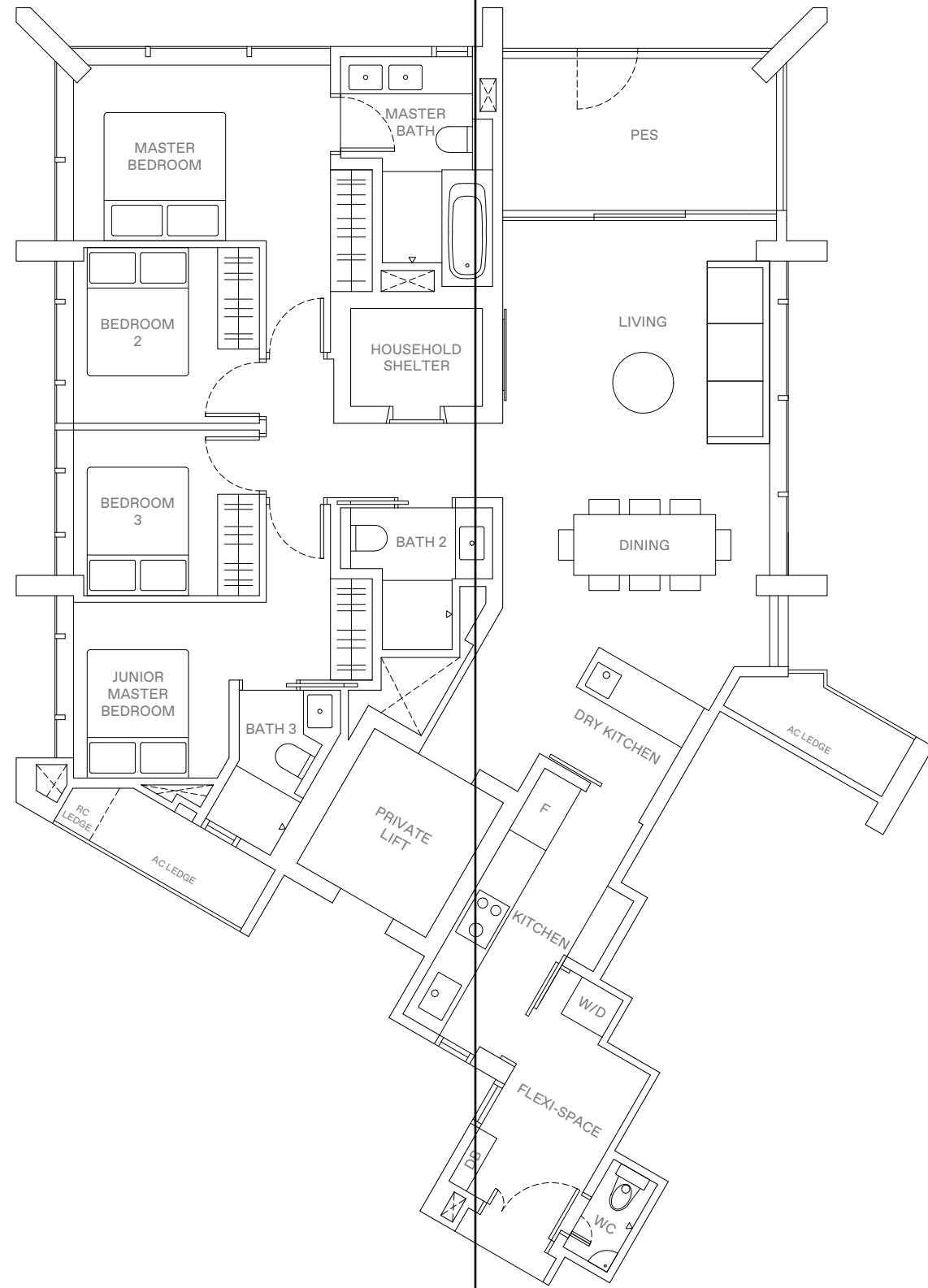
AREA INCLUDES AIR-CON (A/C) LEDGE, BALCONY AND STRATA VOID AREA WHERE APPLICABLE. THE PLANS ARE SUBJECT TO CHANGE AS MAY BE APPROVED BY RELEVANT AUTHORITIES. ALL FLOOR PLANS ARE APPROXIMATE MEASUREMENTS ONLY AND ARE SUBJECT TO GOVERNMENT RE-SURVEY. THE BALCONY SHALL NOT BE ENCLOSED UNLESS WITH THE APPROVED BALCONY SCREEN. FOR AN ILLUSTRATION OF THE APPROVED BALCONY SCREEN, PLEASE REFER TO THE DIAGRAM ANNEXED HERETO AS "ANNEXURE A".



4 - BEDROOM . TYPE D2P

137 sqm | 1,475 sqft

11 Jalan Anak Bukit: #05-98

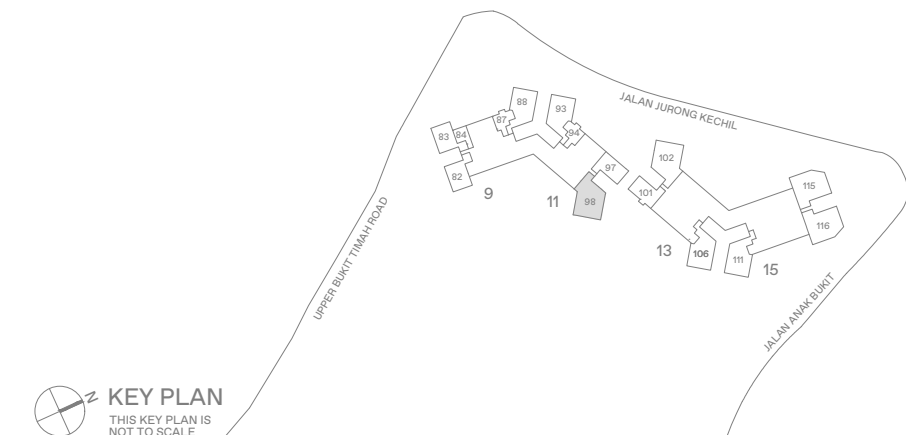


LEGEND

- WD WASHER-DRYER
- W/D WASHER AND DRYER
- F FRIDGE
- DB DISTRIBUTION BOX



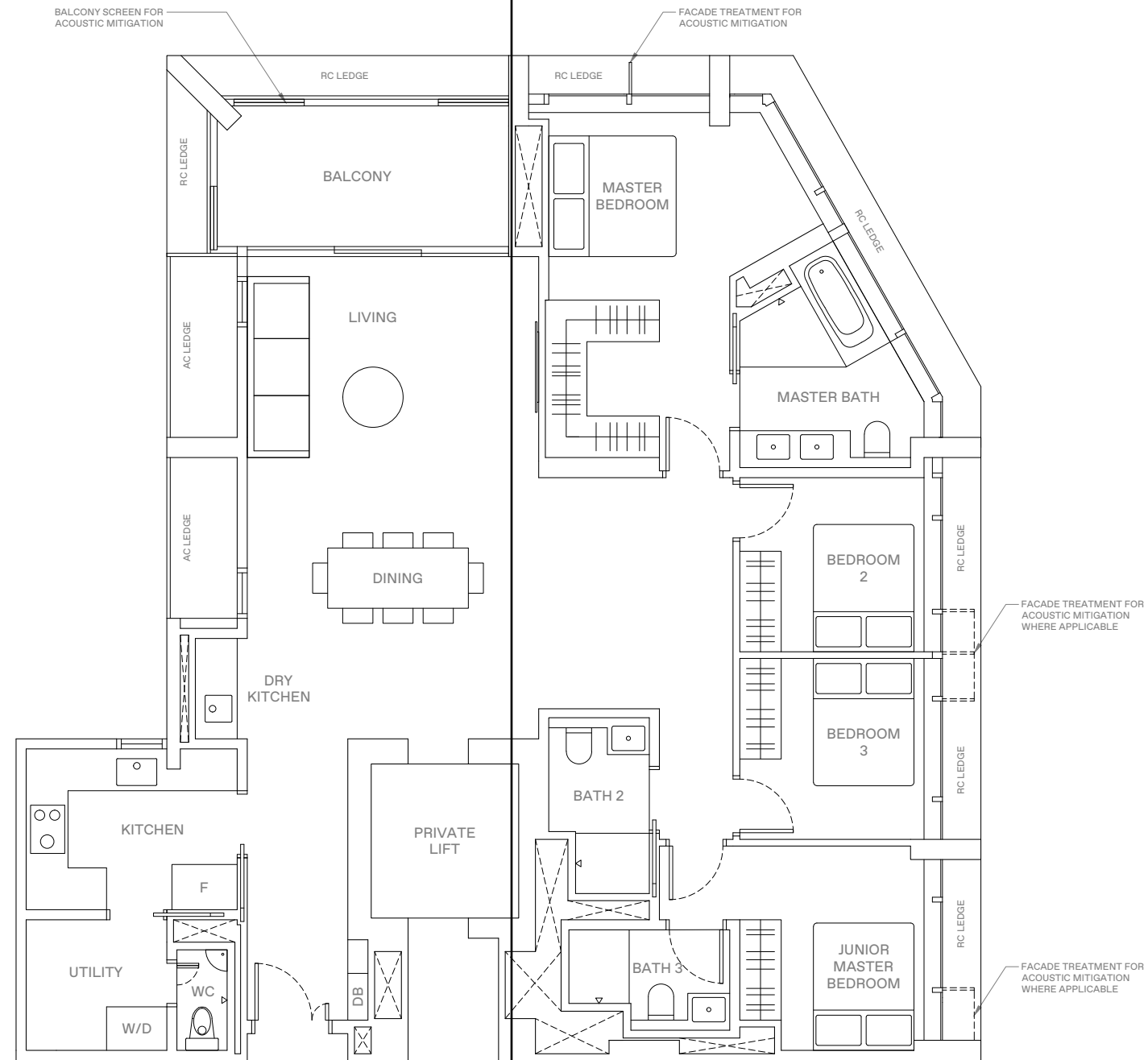
AREA INCLUDES AIR-CON (A/C) LEDGE, BALCONY AND STRATA VOID AREA WHERE APPLICABLE. THE PLANS ARE SUBJECT TO CHANGE AS MAY BE APPROVED BY RELEVANT AUTHORITIES. ALL FLOOR PLANS ARE APPROXIMATE MEASUREMENTS ONLY AND ARE SUBJECT TO GOVERNMENT RE-SURVEY. THE BALCONY SHALL NOT BE ENCLOSED UNLESS WITH THE APPROVED BALCONY SCREEN. FOR AN ILLUSTRATION OF THE APPROVED BALCONY SCREEN, PLEASE REFER TO THE DIAGRAM ANNEXED HERETO AS 'ANNEXURE A'.



4 - BEDROOM . TYPE D3

151 sqm | 1,625 sqft

15 Jalan Anak Bukit: #05-115 (Mirrored)
#05-116

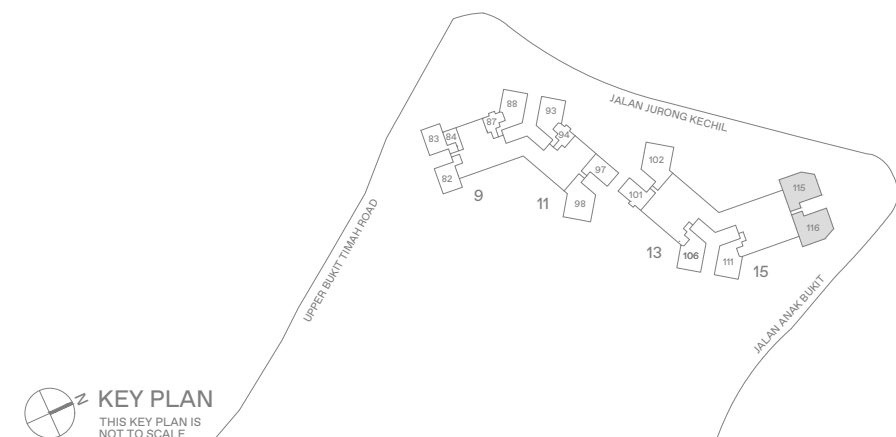


LEGEND

WD	WASHER-DRYER
W/D	WASHER AND DRYER
F	FRIDGE
DB	DISTRIBUTION BOX



AREA INCLUDES AIR-CON (A/C) LEDGE, BALCONY AND STRATA VOID AREA WHERE APPLICABLE. THE PLANS ARE SUBJECT TO CHANGE AS MAY BE APPROVED BY RELEVANT AUTHORITIES. ALL FLOOR PLANS ARE APPROXIMATE MEASUREMENTS ONLY AND ARE SUBJECT TO GOVERNMENT RE-SURVEY. THE BALCONY SHALL NOT BE ENCLOSED UNLESS WITH THE APPROVED BALCONY SCREEN. FOR AN ILLUSTRATION OF THE APPROVED BALCONY SCREEN, PLEASE REFER TO THE DIAGRAM ANNEXED HERETO AS 'ANNEXURE A'.

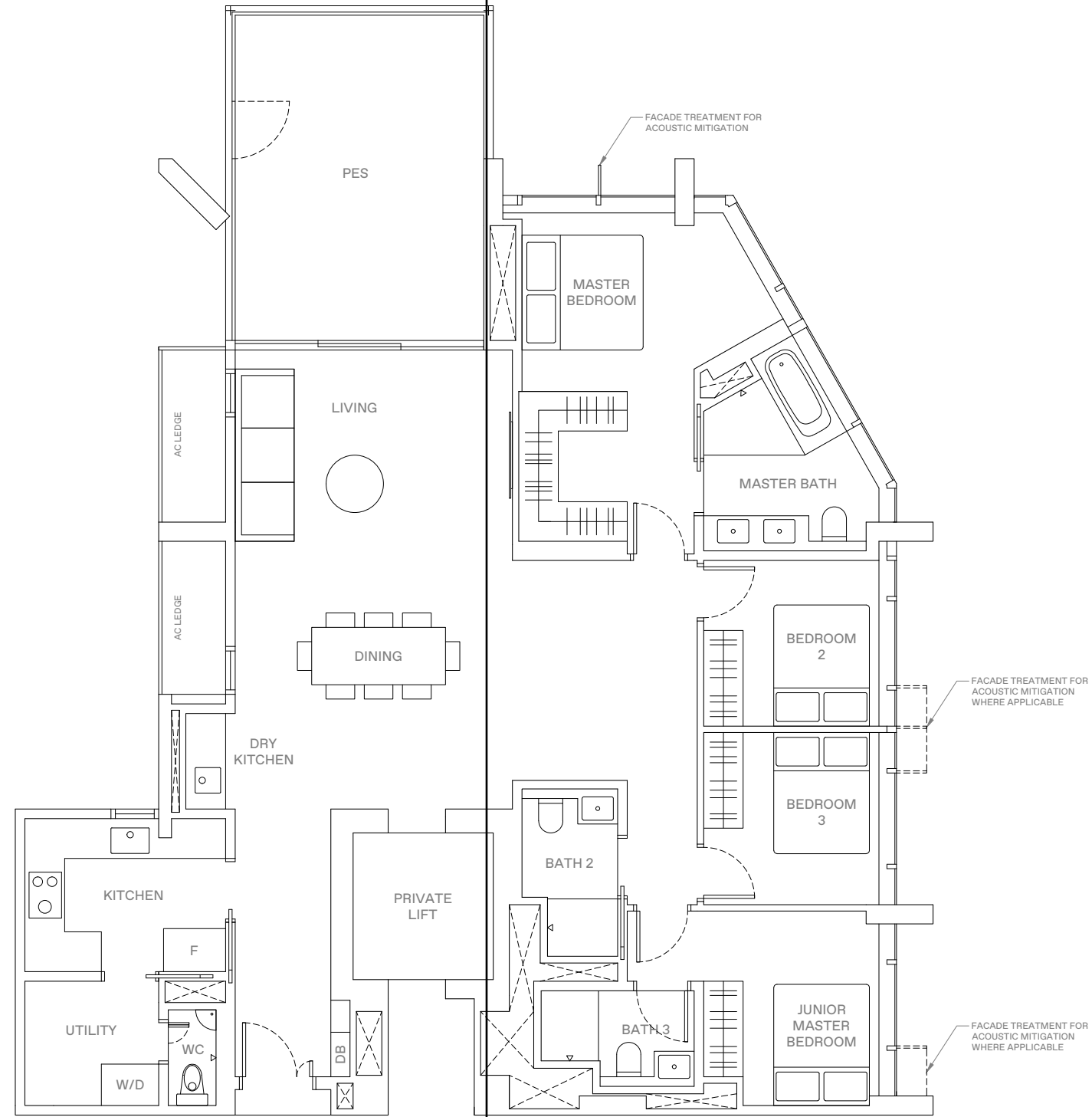


KEY PLAN
THIS KEY PLAN IS NOT TO SCALE

4 - BEDROOM . TYPE D3P

162 sqm | 1,744 sqft

15 Jalan Anak Bukit: #04-115 (Mirrored)
#04-116

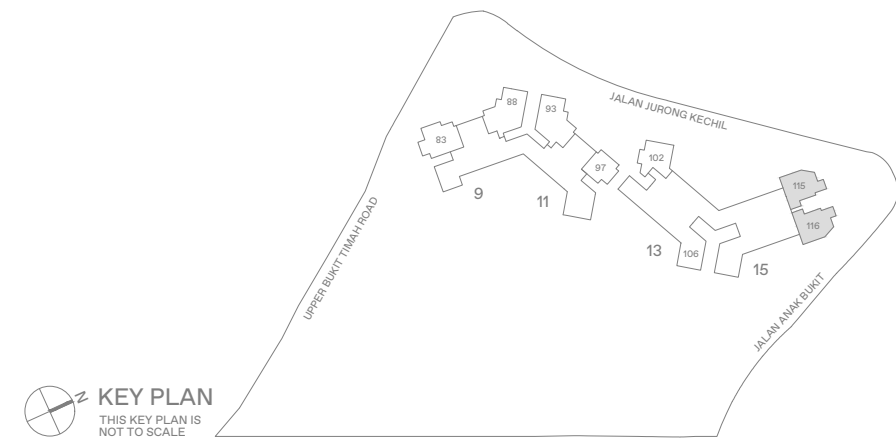


LEGEND

WD	WASHER-DRYER
W/D	WASHER AND DRYER
F	FRIDGE
DB	DISTRIBUTION BOX



AREA INCLUDES AIR-CON (A/C) LEDGE, BALCONY AND STRATA VOID AREA WHERE APPLICABLE. THE PLANS ARE SUBJECT TO CHANGE AS MAY BE APPROVED BY RELEVANT AUTHORITIES. ALL FLOOR PLANS ARE APPROXIMATE MEASUREMENTS ONLY AND ARE SUBJECT TO GOVERNMENT RE-SURVEY. THE BALCONY SHALL NOT BE ENCLOSED UNLESS WITH THE APPROVED BALCONY SCREEN. FOR AN ILLUSTRATION OF THE APPROVED BALCONY SCREEN, PLEASE REFER TO THE DIAGRAM ANNEXED HERETO AS 'ANNEXURE A'.

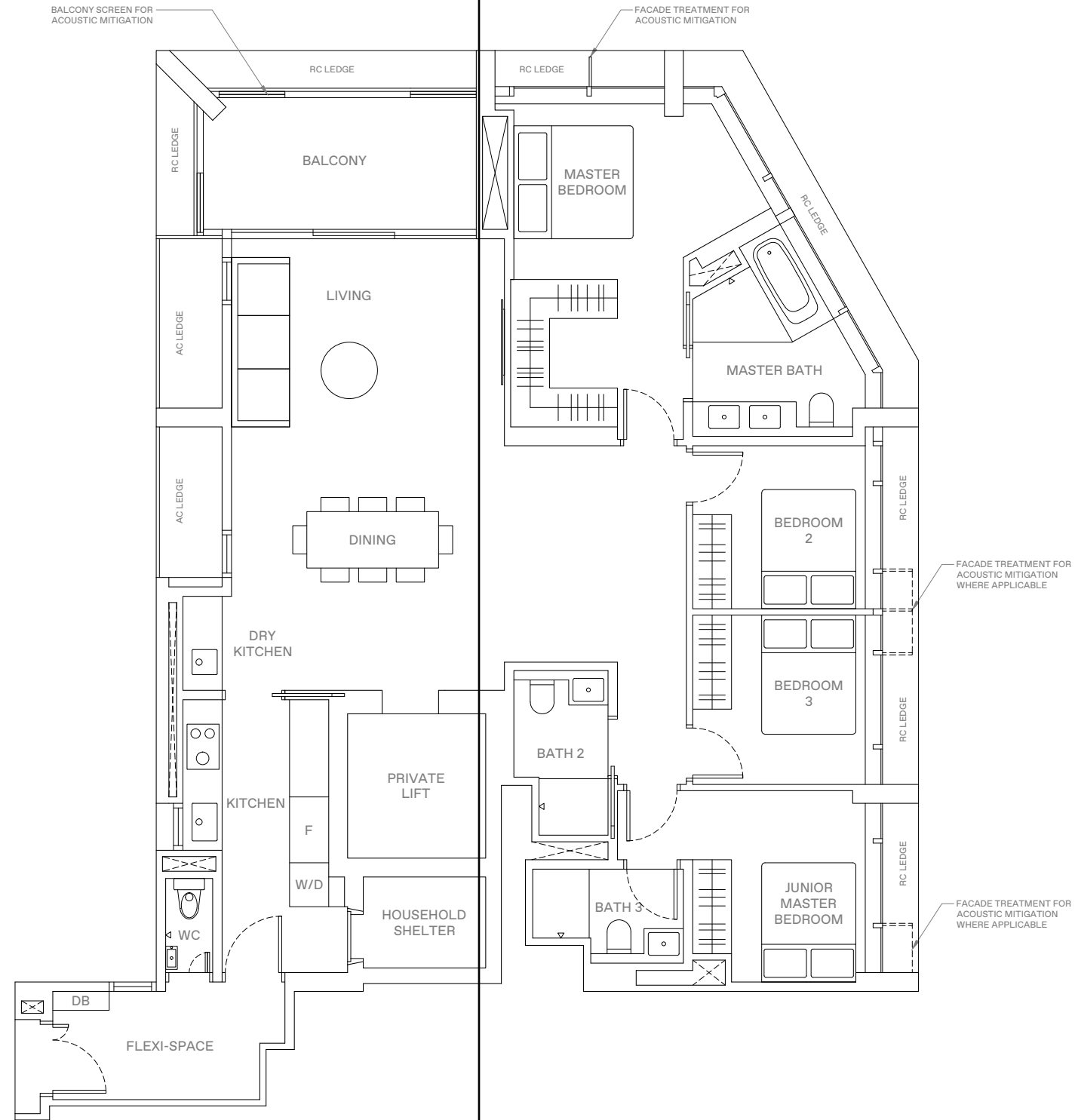


KEY PLAN
THIS KEY PLAN IS NOT TO SCALE

4 - BEDROOM . TYPE D4

151 sqm | 1,625 sqft

15 Jalan Anak Bukit: #06-115 to #16-115, #18-115 to #31-115 (Mirrored)
#06-116 to #16-116, #18-116 to #31-116

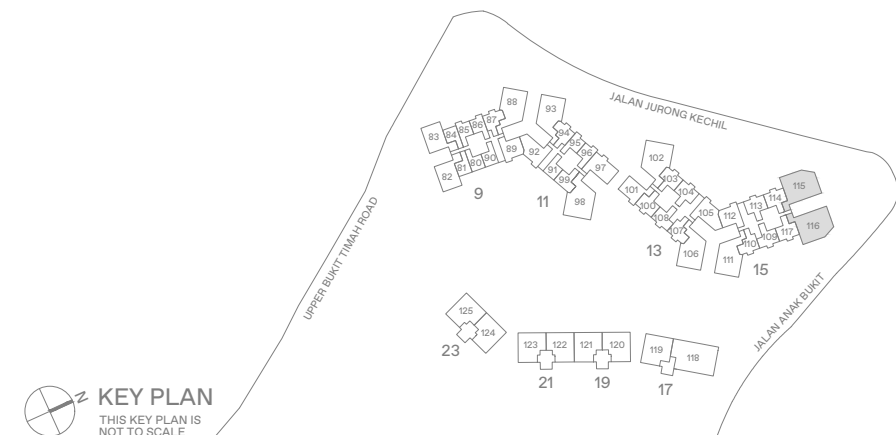


LEGEND

WD	WASHER-DRYER
W/D	WASHER AND DRYER
F	FRIDGE
DB	DISTRIBUTION BOX



AREA INCLUDES AIR-CON (A/C) LEDGE, BALCONY AND STRATA VOID AREA WHERE APPLICABLE. THE PLANS ARE SUBJECT TO CHANGE AS MAY BE APPROVED BY RELEVANT AUTHORITIES. ALL FLOOR PLANS ARE APPROXIMATE MEASUREMENTS ONLY AND ARE SUBJECT TO GOVERNMENT RE-SURVEY. THE BALCONY SHALL NOT BE ENCLOSED UNLESS WITH THE APPROVED BALCONY SCREEN. FOR AN ILLUSTRATION OF THE APPROVED BALCONY SCREEN, PLEASE REFER TO THE DIAGRAM ANNEXED HERETO AS 'ANNEXURE A'.



KEY PLAN
THIS KEY PLAN IS NOT TO SCALE

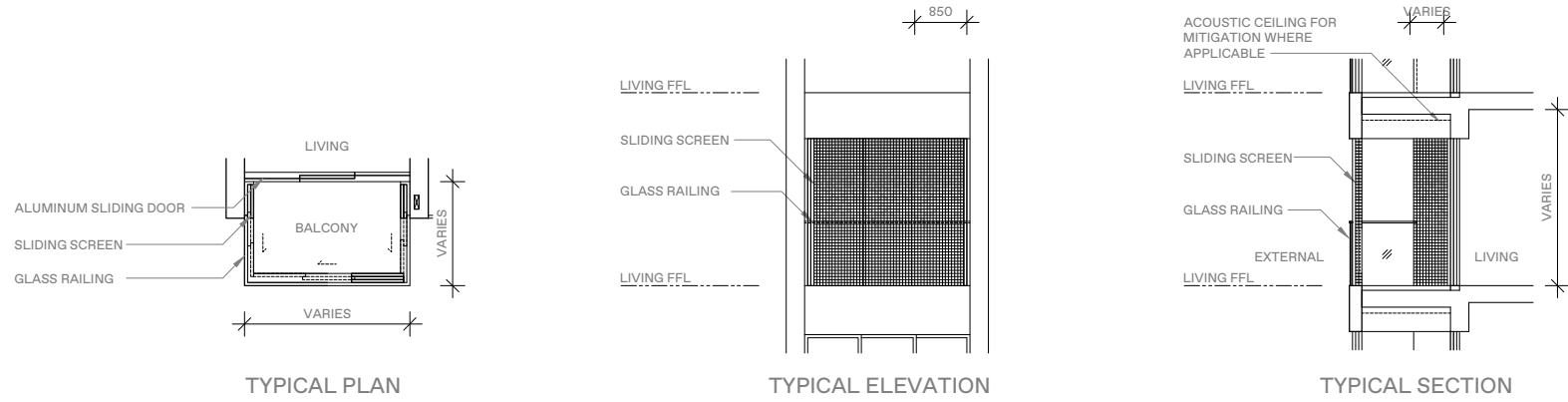
ANNEXURE A

BALCONY SCREEN

APPLICABLE FOR TYPE A2 / B2* / B3* / B4 / B4A / B5 / B5A* / B7 / B7A / B8 / B9P / B9 / C2 / C2A / C3 / P3*

Notes:

1. The balcony shall not be enclosed unless with the approved balcony screen.
2. The purchasers shall have to bear the costs of installing the balcony screen except for the units mentioned in Note 3.
3. The balcony screen will be provided in the following units:
 (1) #18-100 - #31-100, (2) #18-101 - #31-101, (3) #18-107 - #31-107, (4) #18-108 - #31-108,
 (5) #05-109 - #16-109, (6) #06-110 - #16-110, (7) #18-110 - #31-110, (8) #06-117 - #16-117, (9) #18-117 - #31-117

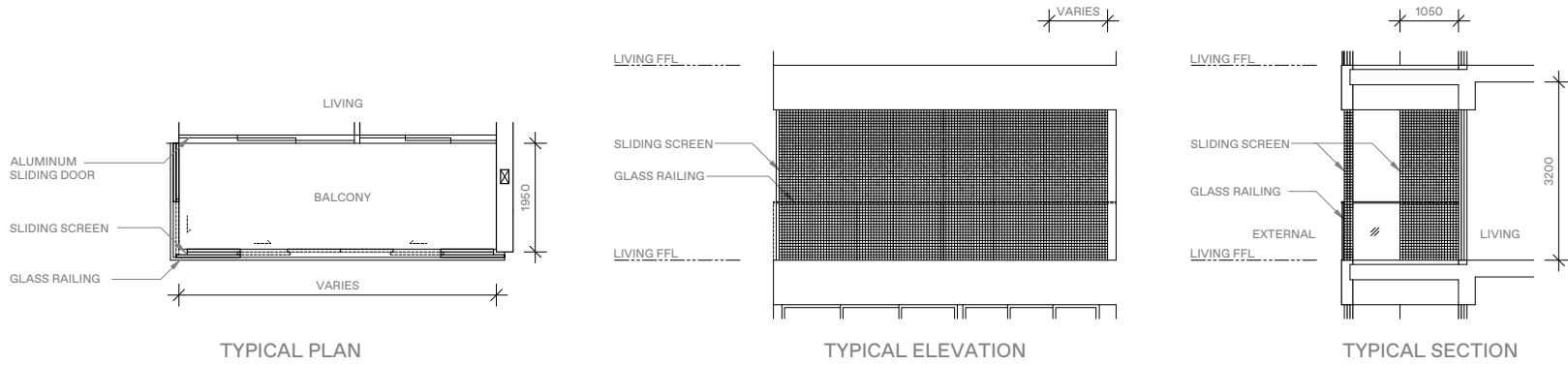


BALCONY SCREEN

APPLICABLE FOR TYPE C6 / C7 / C8

Notes:

1. The balcony shall not be enclosed unless with the approved balcony screen.
2. The purchasers shall have to bear the costs of installing the balcony screen.

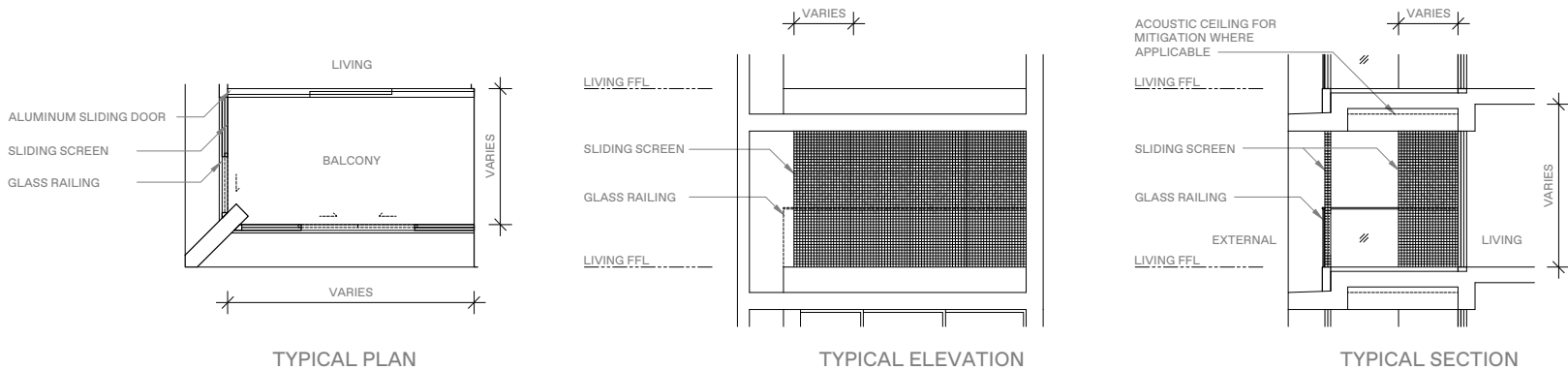


BALCONY SCREEN

APPLICABLE FOR TYPE C4P / C4 / C9* / C10* / D2P / D2 / D5

Notes:

1. The balcony shall not be enclosed unless with the approved balcony screen.
2. The purchasers shall have to bear the costs of installing the balcony screen except for the units mentioned in Note 3.
3. The balcony screen will be provided in the following units:
 (1) #05-106 - #32-106, (2) #05-111 - #32-111, (3) #06-115 - #32-115, (4) #06-116 - #32-116,



Established in 1971, Sino Group is one of Hong Kong's leading property developers. Its core business of developing properties for sale and investment is complemented by a full range of property services as well as hotel and hospitality. The Group's business interests comprise a diversified portfolio of residential, office, industrial, retail and hospitality properties across Hong Kong, mainland China, Singapore and Australia. It has been involved in over 250 projects, spanning more than 130 million square feet.

The Group employs more than 11,000 dynamic and committed staff members, who share the mission of building a better community.

sino.com



Far East Organization is a Christian Enterprise, which develops real estate and operates businesses by serving with grace, love, integrity and honesty. Together with its Hong Kong-based sister company Sino Group, they are one of Asia's largest real estate groups, with operations in Singapore, Malaysia, Australia, Japan, China (Mainland and Hong Kong) and USA. Far East Organization is the largest private property developer in Singapore, having developed over 780 developments across all segments of real estate including 55,000 private homes in Singapore since its establishment in 1960. It includes three listed entities: Far East Orchard Limited, Far East Hospitality Trust and Yeo Hiap Seng Limited. Far East Organization is the winner of 13 FIABCI World Prix d'Excellence awards, the highest honour in international real estate.

fareast.com.sg

